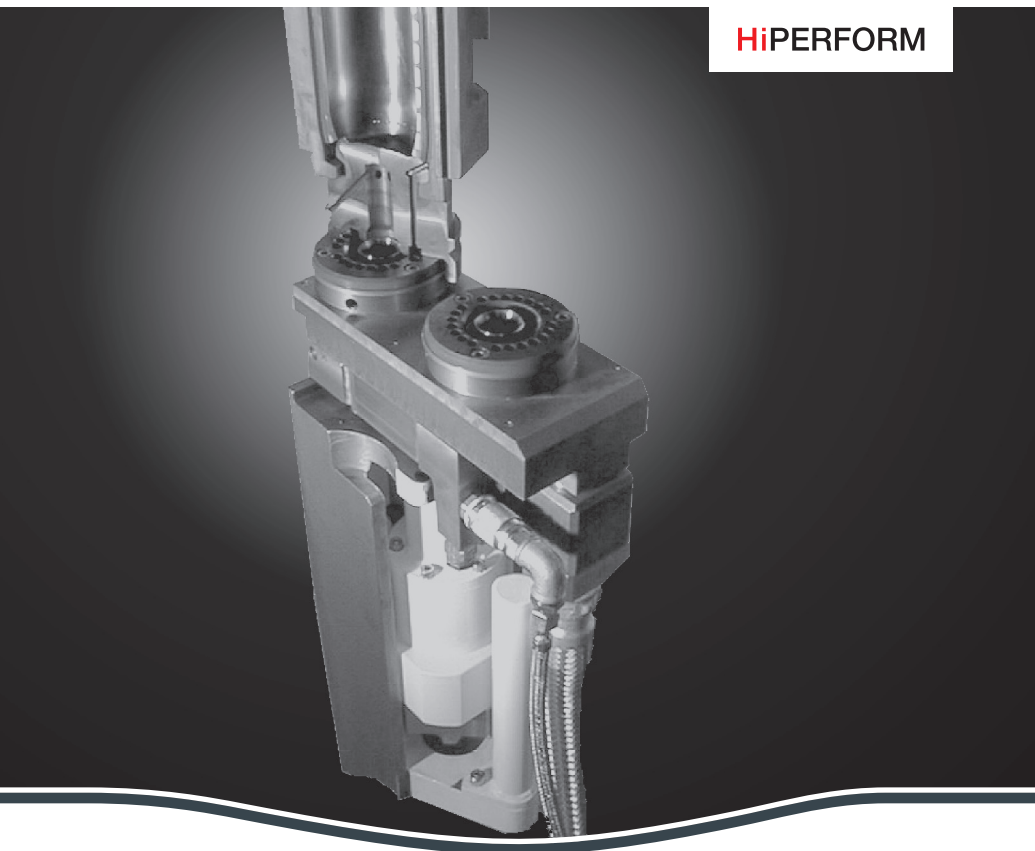


WE ARE GLASS PEOPLE

BLOW MOULD BOTTOM MECHANISM

Type 210140



THE BLOW MOULD BOTTOM MECHANISM

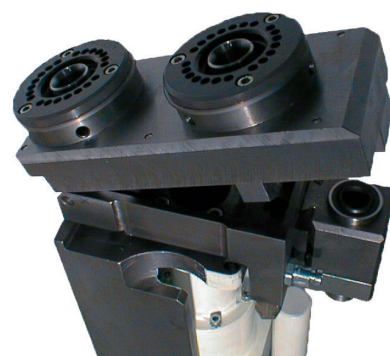
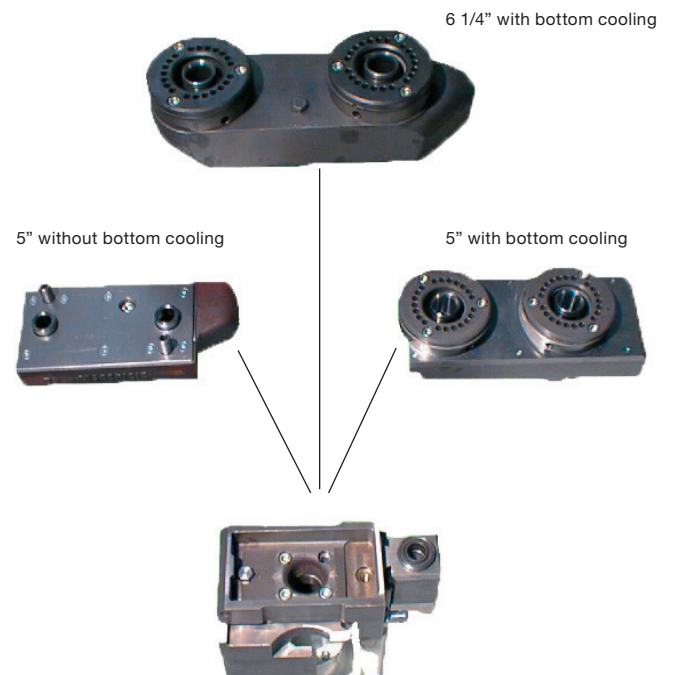
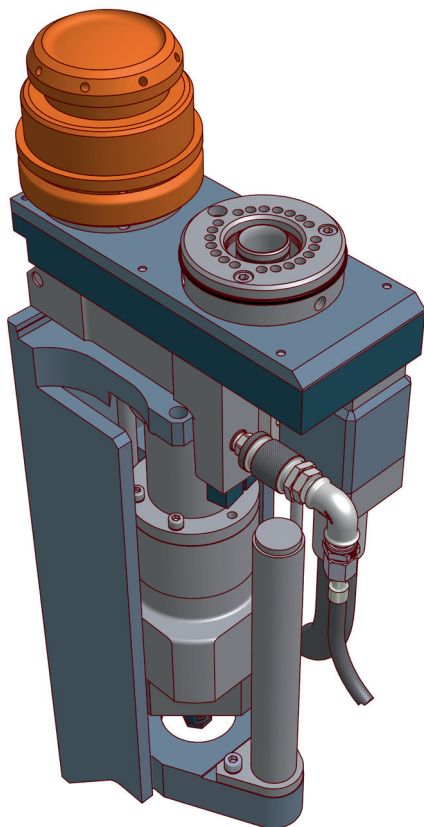
This mechanism can be used in connection with the blow mould axial cooling and serves to axially cool blow mould bottoms of 5" and 6¼" DG IS-Machines. In addition, it guides vacuum through the blow mould bottoms.

The device can also be used for radially cooled moulds.

Cooling

The bottom bracket can either be used intermittently or with permanent cooling. Preferably, it should be used intermittently as it can be switched off if there is a risk of birdsings during the reheating time.

The cooling can be manually adjusted. The cooling air amount for the blow moulds and blow mould bottoms is regulated by a throttle flap (7) which is installed in the bottom bracket.

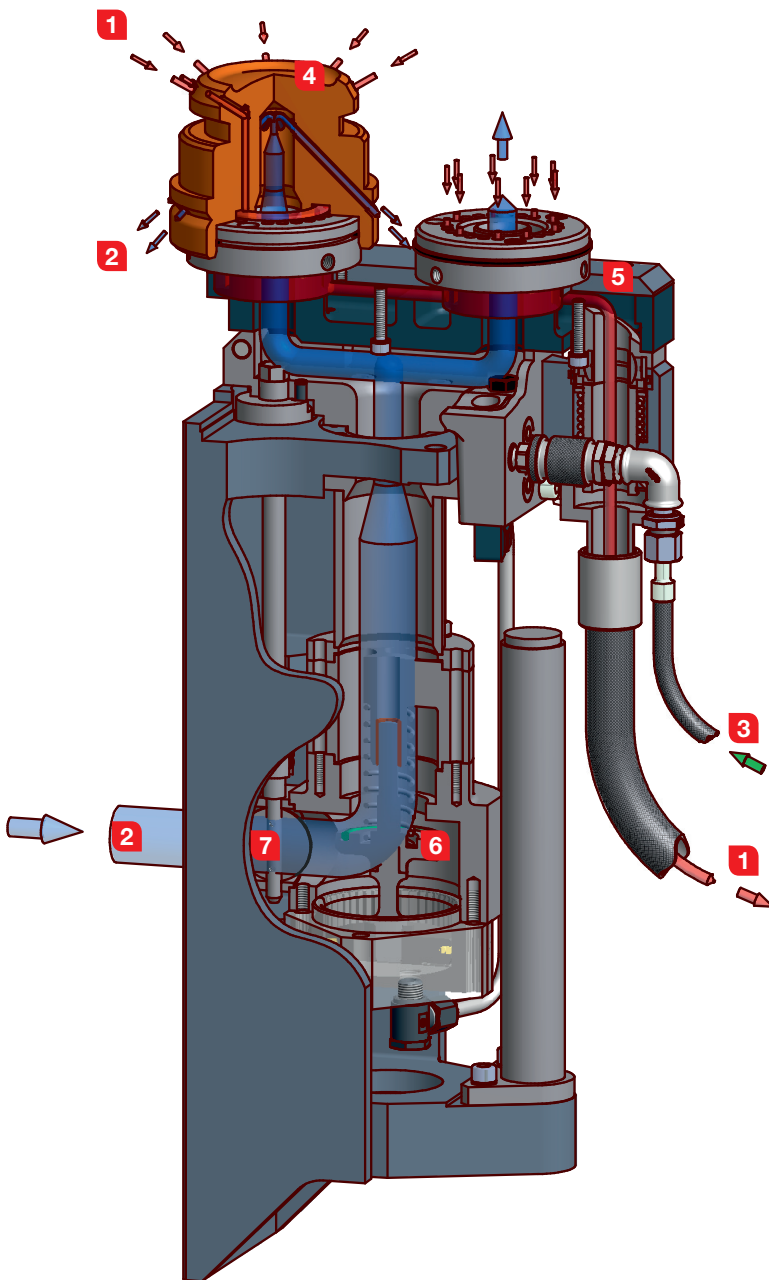
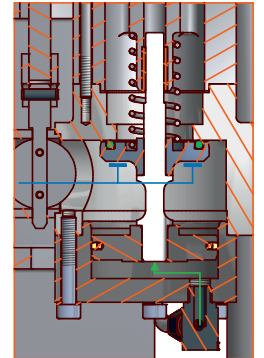
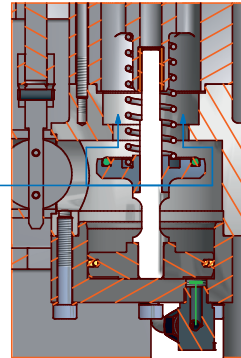


For bottom plate adapter exchange
Forced connection for vacuum and cooling air

FLOATING BLOW MOULD BOTTOM WITH COOLING AND VACUUM

Valve (6) normal position:
Cooling opened

Valve (6) switched:
Cooling closed



- 1** Vacuum
- 2** Cooling air
- 3** Pilot air for bottom cooling
- 4** Blow mould bottom
- 5** Axial bottom plate adapter
- 6** Intermittent valve
- 7** Throttle flap

OVERVIEW

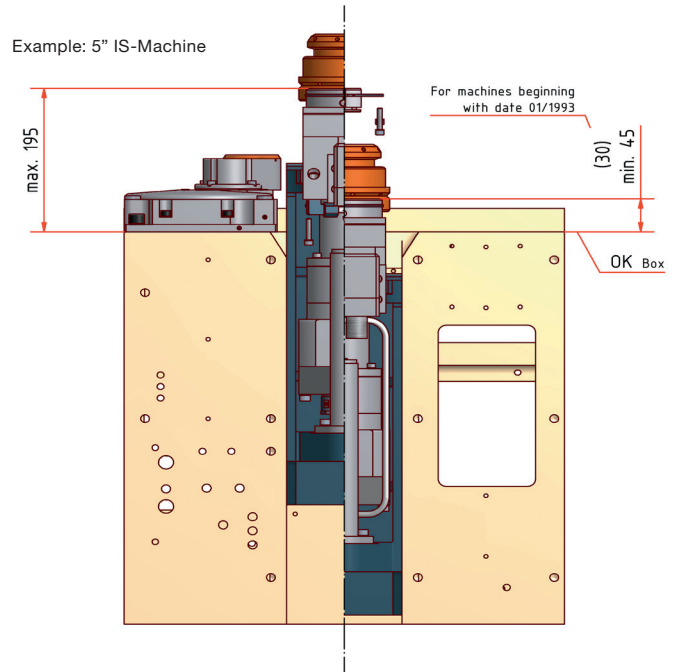
Advantages

- Exchangeable bottom plate adapter
- Bottom cooling separated from mould cooling
- Reliable separation of vacuum and cooling air
- Applicable for bottoms with and without internal cooling
- Can also be used for radially cooled moulds

Scope of Delivery

- Bottom bracket
- Axial bottom plate adapter

Max. adjustment range for 5" and 6 1/4" IS-Machines (from upper edge box to upper edge bottom plate adapter)



The maximum adjustment range of the bottom bracket in the IS-Machine is 195 mm.

The maximum adjustment range of the bottom bracket in the 6 1/4" IS-Machine is 175 mm.