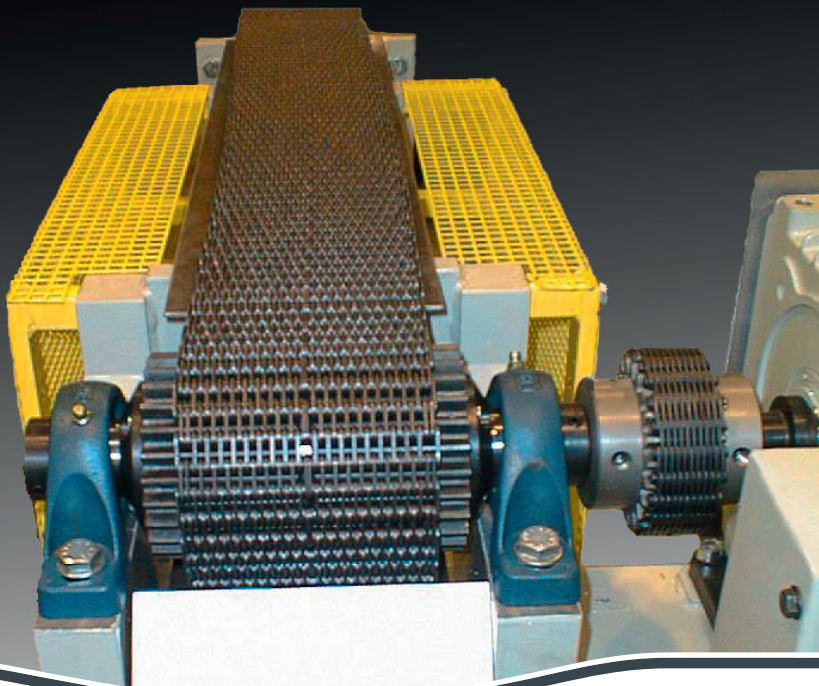


WE ARE GLASS PEOPLE

BASIC CROSS CONVEYOR

Type 4217

HiPERFORM



THE CROSS CONVEYOR

The production machine continuously delivers articles to the machine conveyor. A deflection unit transfers the articles in defined distances to the Cross Conveyor.

According to the design, the articles are either delivered from the right or from the left.

Application range

This Cross Conveyor is to be used for lehr belt widths up to 3500 mm.

For larger lehr belt widths (3600 mm and more) the Type 4216 is available.

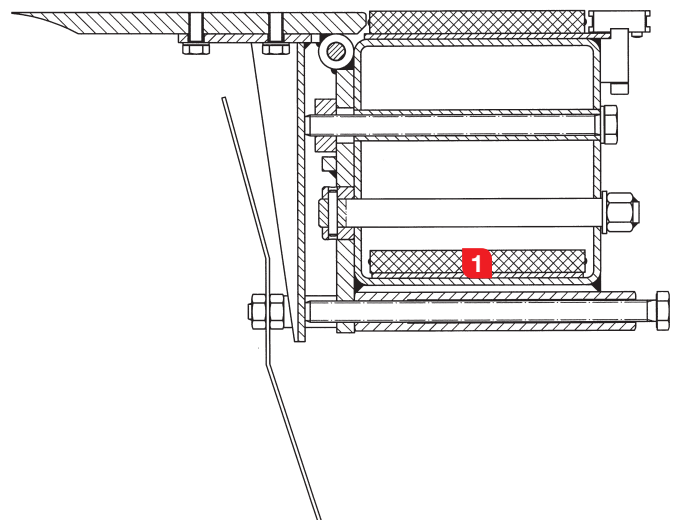
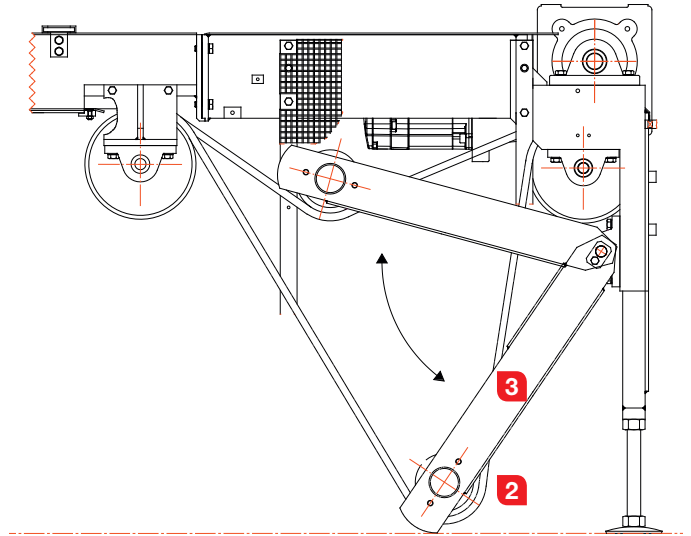
As transport chain a silent chain with a nominal width of 125 mm (5") is used.

Function

The cross conveyor body is made of a steel tube. The return travel of the transport chain is carried inside the conveyor body on wear-resistant metal sheets (1). Due to wear (and temperature) the transport chain will get longer. For compensating this elongation the cross conveyor drive is equipped with a plane idler roller (2) which is supported by swivelling arms (3). The elongation of the transport chain causes a lowering of the swivelling arms (3). Thus a compensation of approx. 650 mm transport chain elongation is possible at a conveyor height of 1000 mm.

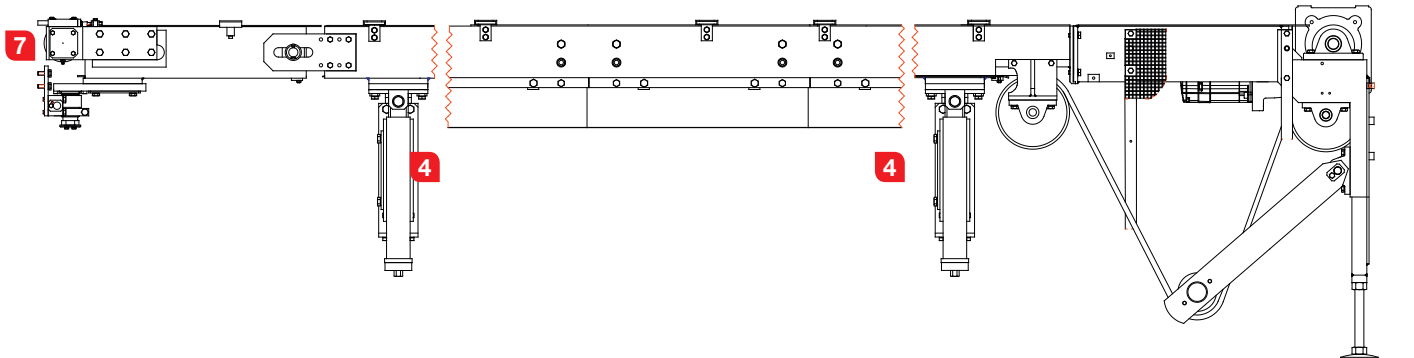
In order to avoid irregularities in run caused by piled-up dirt, the guide pulley of the transport chain return guide should also be a plane type (7).

- 1** Metal sheets
- 2** Idler roller
- 3** Swivelling arms

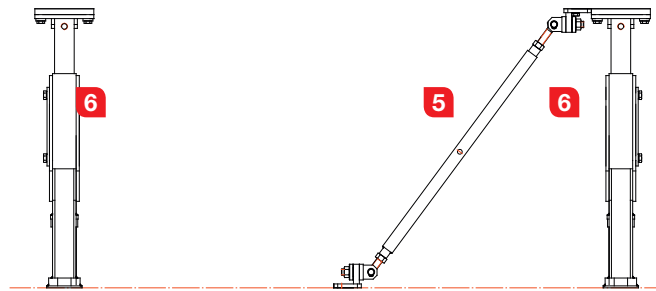


INSTALLATION

The Cross Conveyor will generally be supplied with consoles which are prepared for lehr mounting. As an option, the conveyor can be prepared for installation on supports.



- 4** Consoles
- 5** Brace
- 6** Support
- 7** Guide pulley
- 8** Transfer plates



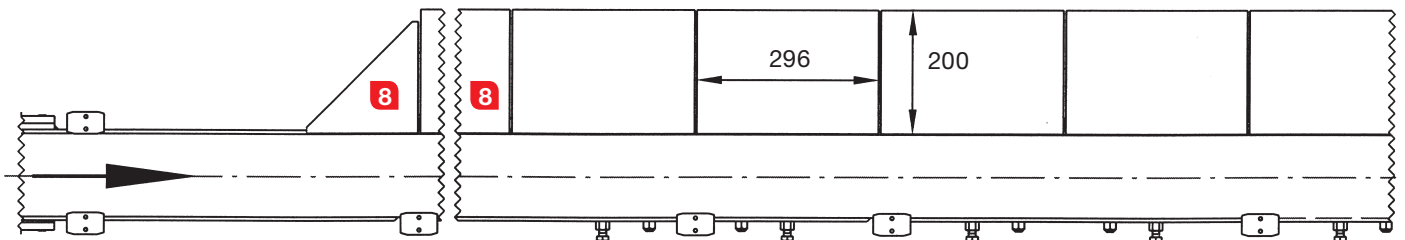
Transfer plates

The transfer plates (8) are made of cast iron.
The transfer plates are adjustable:

- In height in conveyor direction
- In inclination

Drive

As drive a Simotion® servo motor is used. On demand also motors of the size DIN/IEC 112 to 132 can be installed.
For further information please contact us.



OVERVIEW

Advantages

- Compensation of approx. 650 mm transport chain elongation possible
- Available with console prepared for lehr mounting
- Guide pulley of the transport chain return guide designed as plane roller
- Exact adaption of the cross conveyor height to the machine conveyor / ware transfer

Technical Data

- Nominal width of transport chain 125 mm
- According to your order the height is adjustable by means of the threaded spindles
 - 760 – 920 mm
 - or 880 – 1040 mm
 - or 1000 – 1160 mm
- Weight according to type up to 900 kg

Scope of Delivery

- Cross conveyor drive
- Conveyor body with transfer plates
- Conveyor deflection
- Intermediate conveyor body
- Two consoles

Option

Two supports and one brace instead of both consoles

Emissions

- The A-weighted permanent sound pressure level of this system is below 70 dB(A)