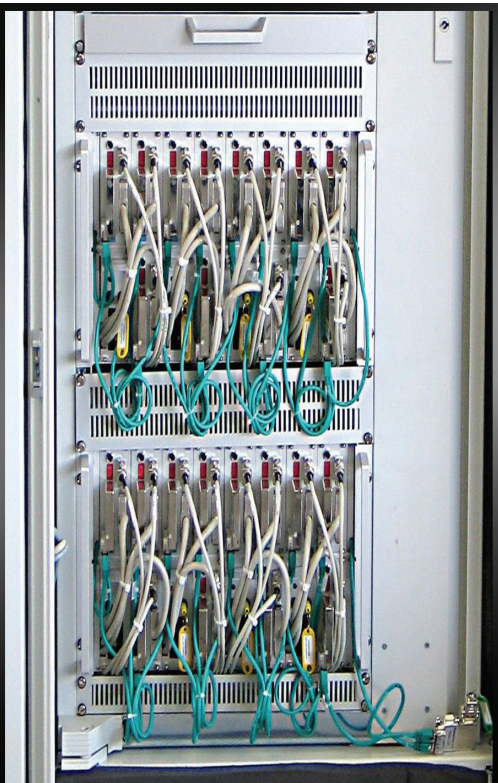


WE ARE GLASS PEOPLE

# HEYE

# MODULAR SERVO TECHNOLOGY

Type 4530



HiPERFORM

 **heye**  
international

## HEYE HMST - MODULAR SERVO TECHNOLOGY

The HMST is a trend-setting drive concept to control servo drives in the IS-Machine and their periphery. Optionally, the single servo drives can be moved easily (intuitively) via the operator panel of the IS-Machine and can thus be adapted to the requirements.

### Modular construction

The modular system design allows a system-specific solution including the option to be upgraded.



### The standard system consists of:

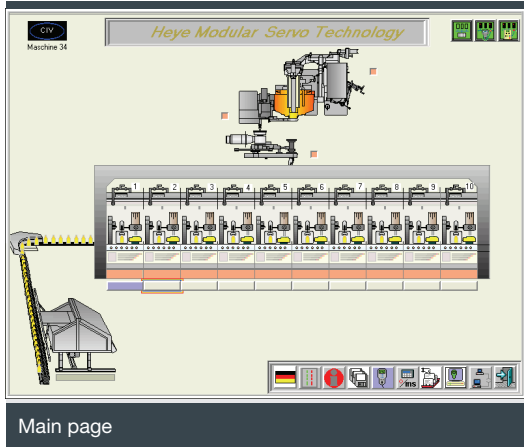
- An infeed cabinet and a module cabinet
- A PC with process visualisation and the option to link several Heye Hot End Drives (e.g. Servo Takeout, Servo Invert, Multi-Circuit Central Lubrication and all Heye Pusher types)

## ADVANTAGES OF THE PROCESS VISUALISATION

- High availability by an independently operating visualisation and real time control
- Easy access on all parameters
- Article administration for all process parameters allows short job change times
- Error report for all systems
- Option to link several Heye Hot End Equipment via CAN-Bus / Ethernet makes the entire system easy-to-follow
- Operating system Windows®

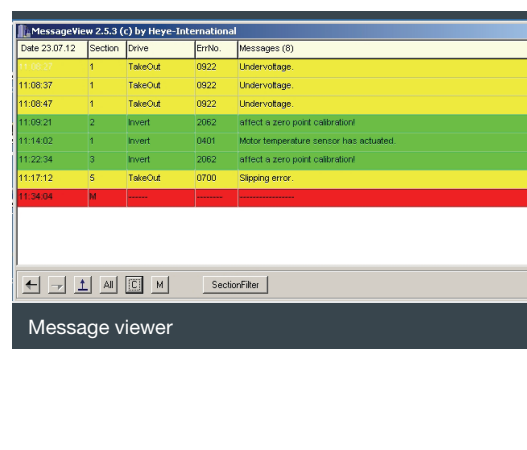
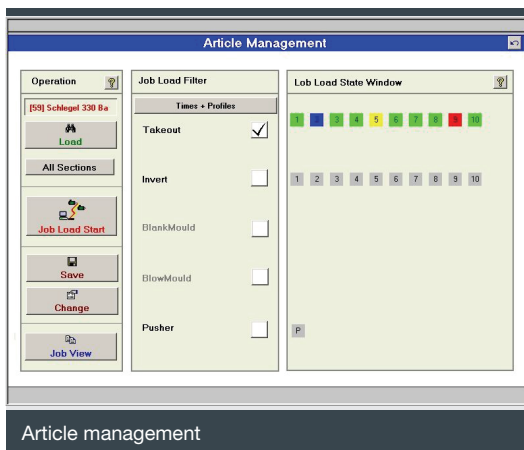
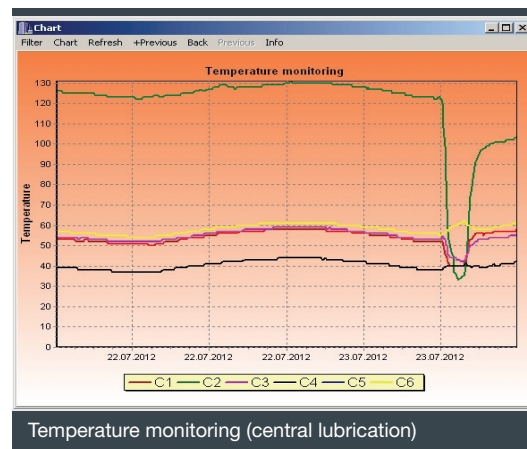
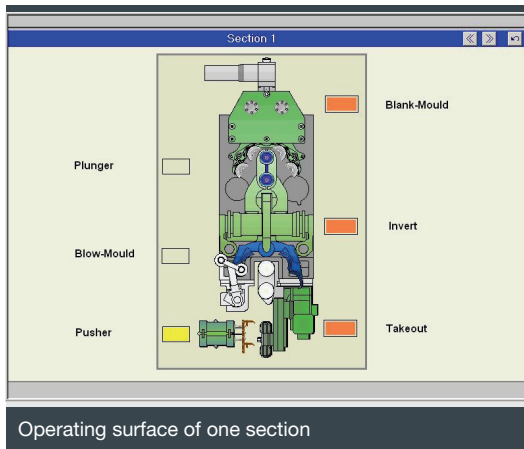
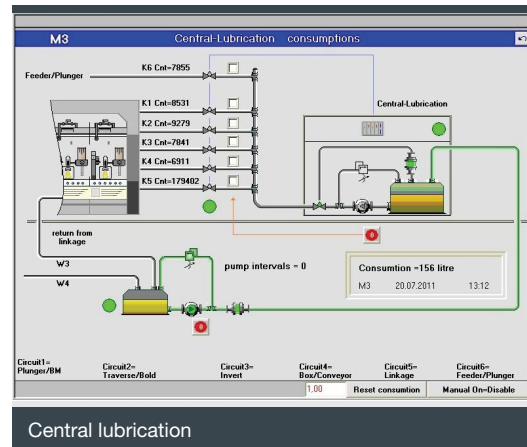
# HMST MAIN MENU

You can reach the menu level of a section or of a peripheral device by clicking on the relevant display in the main menu.



# HMST MESSAGE SYSTEMS

In the message view any occurring error messages of all sections are listed. For a clearer view the messages of a selected section can be filtered and reduced.



# OVERVIEW

## Advantages

- Reproducible motion profile
- Autonomously operating servo axes (intelligence in the converter - high availability)
- Components of one servo axis are exchangeable without switching the entire system off
- Additional servo axes can be upgraded in a modular way
- Servo axes can be coupled with any IS E-Timing
- Correction of position possible during operation without section stop
- Parameters can be set during the motion
- No active electronics in the IS-Machine area
- Multi-client capable

## Scope of Delivery

- Infeed cabinet
- Module cabinet
- PC with process visualisation and the option to link all Heye Hot End Drives

**Heye International GmbH**  
Lohplatz 1, 31683 Obernkirchen  
Germany

T +49 5724 26 452  
F +49 5724 26 229

[www.hey-international.com](http://www.hey-international.com)

