

PRODUCT GUIDE

STANDARD VARIABLES

4 ¼" SG & DG

5" SG & DG

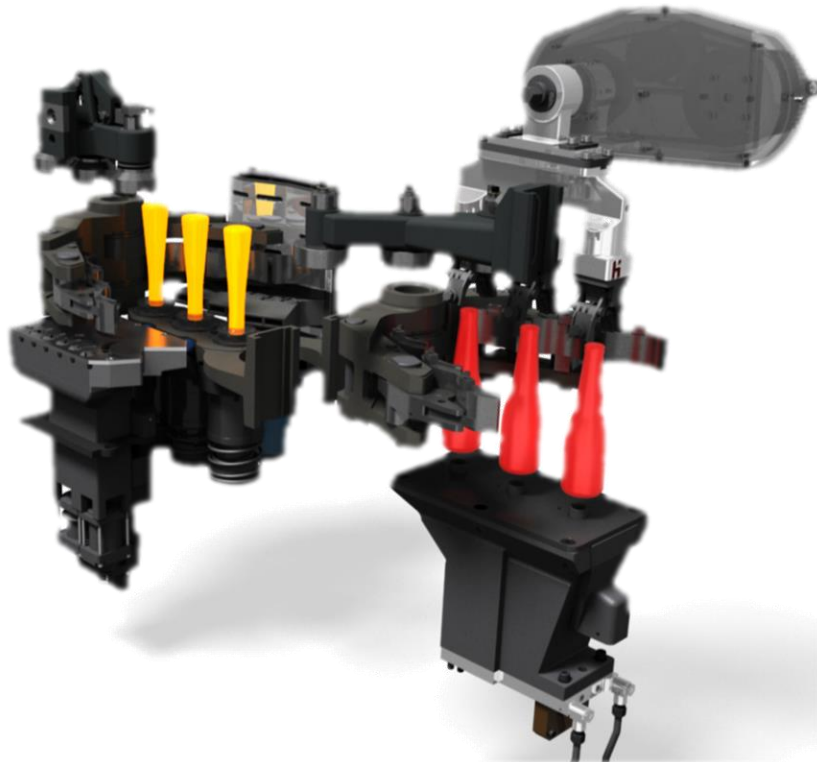
85mm TG

5 ½" SG & DG

6 ¼" SG & DG

4 ¼" TG

95mm QG



Data Sheets & Limits for Variables available on request

Version November 13, 2020

NOTE: The images shown in this catalog are only examples.

© Heye International GmbH
Obernkirchen, Germany

DELIVERY SYSTEM

6

Scoops Set – SG.....	7
Scoops Set – SG+.....	8
Scoops Set – DG.....	9
Scoops Set – TG.....	10
Troughs Set – SG.....	11
Troughs Set – SG+.....	12
Troughs Set – DG.....	13
Troughs Set – TG.....	15
Deflector Set – SG.....	17
Deflector Set – SG+.....	19
Deflector Set – DG.....	21
Deflector Set – TG.....	23

BLANK MOULD COOLING

25

Blank Mould Cooling – 4 1/4“ DG.....	26
NNPB – Axial Mould Cooling (AC).....	26
Blank Mould Cooling – 5“ DG.....	27
NNPB – Axial Mould Cooling (AC).....	27
Blank Mould Cooling – 85mm tg.....	28
NNPB – Axial Mould Cooling (AC).....	28
Blank Mould Cooling – 4 1/4“ DG.....	29
BB – Stack cooling Radial – With HI-Intermittend Valve and Neckring Cooling.....	29
Blank Mould Cooling – 5“ DG.....	30
BB – Stack cooling Radial – With HI-Intermittend Valve and Neckring Cooling.....	30
Blank Mould Cooling – 85mm TG.....	31
BB – Stack cooling Radial – With HI-Intermittend Valve and Neckring Cooling.....	31
Blank Mould Cooling – 5“ DG – HiFlow.....	32
PB – HiFlow DG With or without neck ring cooling.....	32
Blank Mould Cooling – 5 1/2” DG.....	33
BB – Stack cooling Radial – With Neckring Cooling.....	33
Blank Mould Cooling – 6 1/4“ DG.....	34
NNPB – Axial Mould Cooling (AC) with height adjustment.....	34
Blank Mould Cooling – 6 1/4“ DG.....	35
NNPB – Radial Mould Cooling (RC) with Double valve.....	35
Blank Mould Cooling – 6 1/4“ DG.....	36
BB – Radial Mould Cooling (RC) with Double valve.....	36
Blank Mould Cooling – 4 1/4“ TG.....	37
NNPB – Axial Mould Cooling (AC) with height adjustment.....	37
Blank Mould Cooling – 4 1/4“ TG.....	38
NNPB – Radial Mould Cooling (RC) with Double valve.....	38

BLOW MOULD COOLING

39

Blow Mould Cooling – VAS – 5” Machine.....	40
Vertical Air Stream (VAS) with V-Insert cpl. with bottom plate.....	40
Blow Mould Cooling – VAS – 6 1/4” Machine.....	41
Vertical Air Stream (VAS) with V-Insert cpl. with bottom plate.....	41
Blow Mould Cooling – Bottom mechanism.....	42
Axial Mould Cooling (AC) blow mould bottom mechanism with bottom adapter.....	42
Blow Mould Cooling – Stack cooling – 5” Machine.....	43

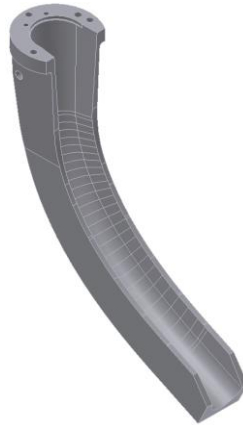
stack Cooling radial with separate intermittent valve	43
Blow Mould Cooling – 360° - 5” Machine	44
Axial Mould Cooling (AC) equipped with ball bearings.....	44
Blow Mould Cooling – 5” CD DG for assortment.....	45
stack Cooling radial with separate intermittent valve	45
Blow Mould Cooling – Stack cooling – 85mm TG	46
stack Cooling radial with separate intermittent valve	46
Blow Mould Cooling – 5 ½” DG	47
BB – Stack cooling Radial.....	47
Blow Mould Cooling – 5 ½” DG	48
360° AXIAL Mould COOLING.....	48
Blow Mould Cooling – 6 ¼” CD DG	49
Axial Mould Cooling (AC) equipped with ball bearings.....	49
Blow Mould Cooling – 6 ¼” DG	50
360° AXIAL Mould COOLING.....	50
Blow Mould Cooling – 4 ¼” CD TG	51
360° AXIAL Mould COOLING (AC).....	51
Blow Mould Cooling – 6 ¼” CD DG	52
stack Cooling radial.....	52
Blow Mould Cooling – 4 ¼” CD TG	53
stack Cooling radial.....	53
BLANK MOULD HOLDER	54
Blank Mould Holder – 4 1/4” CD DG.....	55
Blank Mould Holder – 5” CD DG	56
Axial & Radial Mould Cooling.....	56
Blank Mould Holder – 85mm CD TG.....	57
Blank Mould Holder – 5 ½” CD DG	58
Blank Mould Holder – 6 ¼” CD DG	59
Axial & Radial Mould Cooling.....	59
Blank Mould Holder – 4 ¼” CD TG	60
Axial & Radial Mould Cooling.....	60
BLOW MOULD HOLDER	61
Blow Mould Holder – 4 1/4” CD DG.....	62
Blow Mould Holder – 5” CD DG	63
Axial & Radial Mould Cooling.....	63
Blow Mould Holder – 85mm CD TG.....	64
Blow Mould Holder – 5 ½” CD DG	65
Blow Mould Holder – 6 ¼” CD DG	66
Axial & Radial Mould Cooling.....	66
Blow Mould Holder – 4 ¼” CD TG	67
Vertical & Radial Mould Cooling.....	67
CARTRIDGES / PLUNGER POSITIONER	68
Quick Change Cartridge – BB	69
Plunger Positioner – NNPB / PB	70
FUNNEL HOLDER	71
Funnel Holder - Piston Rod Ø 38.1 mm	72

Funnel Holder – Quick Change	73
BAFFLE HOLDER	74
Baffle Holder - Piston Rod	75
Baffle Holder - Quick Change	76
Baffle Holder for Pantograph on 5”-Machine	77
Baffle Holder for Pantograph on 6 ¼”-Machine	78
NECKRING HOLDER	79
Neckring Holder (WidE=76,2).....	80
Neckring Holder (wide=76,2).....	81
Neckring Holder (small=58).....	82
Neckring Holder (small=58).....	83
BLOW HEAD HOLDER	84
Blow Head Holder - Quick Change.....	85
Blow Head Holder - Quick Change.....	86
(height adjustment only).....	86
TAKE OUT ARM	87
Takeout - Arm	88
For Pneumatic & Servo Mechanism	88
TAKE OUT HEAD	89
Takeout - Tong Head x-y adjustable	90
Insert Type “Antiwink”	90
Takeout - Tong Head non-adjustable.....	91
Insert Type “Antiwink”	91
PUSHER FINGER	92
Pusher finger for Type 2158, 2157 & 2155	93
Pusher finger for Type 2154.....	94
Sheet finger – stainless steel	94
Pusher finger for Type 2154.....	95
Dura Temp finger	95
PUSH BAR	96
Push Bar for Type 4206, 4205, 4201	97
CHAIN FOR WARE TRANSFER	98
Chain for Type 4220.....	99
Chain for Type 4222.....	100

SECTION 1.

DELIVERY SYSTEM

SCOOPS SET – SG



H92			
Size	Material	6 to 12 Sections Part No. (Set)	Mounting Kit
2	Precision casting grey iron	2206190020	on GD Type 2170 and 2171
2 – 3	Precision casting grey iron	2206190016	
3	Precision casting grey iron	2206190015	

Loadmaster – SpeedLine			
Size	Material	6 to 12 Sections Part No. (Set)	Mounting kit
3	Precision casting grey iron	2206190015	On GD Type 2171

SCOOPS SET – SG+



H92			
Size	Material	6 Sect. to 12 Sect. Part No. (Set)	Mounting Kit
4	Aluminum alloy	2206190022	On GD Type 2171
5	Aluminium alloy	2206190040	

Loadmaster – SpeedLine			
Size	Material	6 to 12 Sections Part No. (Set)	Mounting kit
4	Aluminium alloy	2206190022	On GD Type 2171
5	Aluminium alloy	2206190040	

SCOOPS SET – DG



H92			
Size	Material	6 to 12 Sect. Part No. (Set)	Centering Sleeve required?
0	Sheet metal stainless steel	2206190001	Yes
0 – 1 ½	Sheet metal stainless steel	2206190002***	Yes
	Precision casting gray iron	2206190005	Yes
	Precision casting stainless steel	2206190006	Yes
0 – 2	Sheet metal stainless steel	2206190012***	No
2	Sheet metal stainless steel	2206190003	No
	Precision casting gray iron	2206190007	No
	Precision casting stainless steel	2206190008	No
2 – 3	Sheet metal stainless steel	2206190021**	No
	Sheet metal stainless steel	2206190004**	No
	Precision casting gray iron	2206190009	No
	Precision casting stainless steel	2206190010	No
3	Sheet metal stainless steel	2206190035	No
	Precision casting gray iron	2206190014	No
	Precision casting stainless steel	2206190019	No

Loadmaster – SpeedLine			
Size	Material	6 to 12 Sect. Part No. (Set)	Centering Sleeve required?
0	Sheet metal stainless steel	2206190001	Yes
	Sheet metal stainless steel	2206190036	Yes
0 – 1 ½	Sheet metal stainless steel	2206190002***	Yes
	Precision casting gray iron	2206190005	Yes
0-2	Sheet metal stainless steel	2206190012***	No
2	Sheet metal stainless steel	2206190003	No
	Precision casting gray iron	2206190007	No
2-3	Sheet metal stainless steel	2206190021	No
	Precision casting gray iron	2206190009	No
3	Sheet metal stainless steel	2206190035	No
	Precision casting gray iron	2206190014	No

**no use of Scoop 2206190004 since 07-2013 – only use of Scoop 2206190021

***no use of Scoop 2206190002 since 04-2017 – only use of Scoop 2206190012

SCOOPS SET – TG



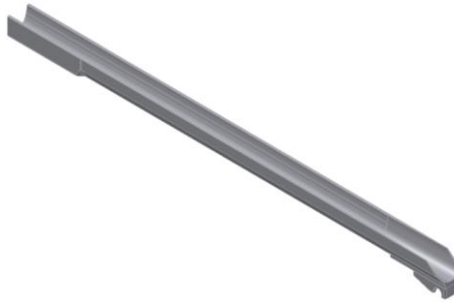
H92				
Size	Material	6 Sect. Part No. (Set)	8 & 10 Sect. Part No. (Set)	12 Sect. Part No. (Set)
0	Sheet metal stainless steel ***	-	2206190037	2206190037
0 – 1 ½	Sheet metal (hose)	-	2206190026 **	2206190028 **
	Sheet metal stainless steel ***	-	2206190011	2206190023
0-2	Sheet metal stainless steel ***	-	2206190038	2206190038
2	Sheet metal (hose)	-	2206190027 **	2206190029 **
	Sheet metal stainless steel ***	-	2206190018	2206190024
2 – 3	Sheet metal (hose)	-	2206190030	2206190030
	Sheet metal stainless steel ***	-	-	2206190025

Loadmaster – SpeedLine		
Size	Material	6 to 12 Sections Part No. (Set)
0	Sheet metal stainless steel ***	2206190037
0 – 1	Sheet metal (hose)	2206190039
0 – 1 ½	Sheet metal (hose)	2206190028
0-2	Sheet metal (hose)	2206190038
2	Sheet metal (hose)	2206190029
2-3	Sheet metal (hose)	2206190030

** Use 2206190026 & 2206190027 only for 8 & 10 section machines until 05-2011. After 05-2011 use scoop set 2206190028 & 2206190029 also for 8 & 10 section machines.

*** No use of Scoops with the material Sheet metal stainless steel since 05-2011, only use of sheet metal with hose

TROUGHS SET – SG



H92				
Size	6 Sect. Part No. (Set)	8 Sect. Part No. (Set)	10 Sect. Part No. (Set)	12 Sect. Part No. (Set)
2	-	-	2206200057	-
2 – 3	-	-	2206200087	-
	-	2206200048**	2206200049 **	-
3	2206200026	2206200047	2206200046	2206200037

Loadmaster - SpeedLine				
Size	6 Sect. Part No. (Set)	8 Sect. Part No. (Set)	10 Sect. Part No. (Set)	12 Sect. Part No. (Set)
0-1	2206200117	2206200115	2206200113	2206200111
¾"	2206200125	2206200123	2206200121	2206200119
0-1 ½"	2206200138	2206200137	2206200136	2206200135
1	2206200133	2206200131	2206200129	2206200127
2	2206200106	2206200105	2206200104	2206200088
2-3	2206200142	2206200141	2206200140	2206200139
3	2206200086	2206200085	2206200084	2206200037

** use material without unmachined cast since 04-2017 , if available

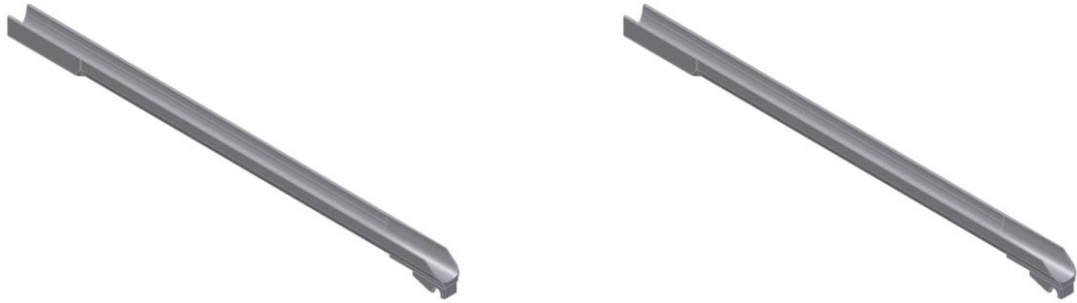
TROUGHS SET – SG+



H92				
Size	6 Sect. Part No. (Set)	8 Sect. Part No. (Set)	10 Sect. Part No. (Set)	12 Sect. Part No. (Set)
4	2206200027	2206200058	2206200044	2206200052
5	2206200028	2206200150	2206200149	2206200148

Loadmaster - SpeedLine				
Size	6 Sect. Part No. (Set)	8 Sect. Part No. (Set)	10 Sect. Part No. (Set)	12 Sect. Part No. (Set)
4	-	-	-	2206200052
5	-	-	-	2206200148

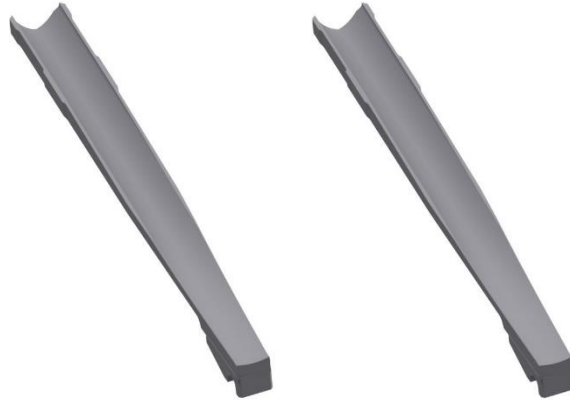
TROUGHS SET – DG



H92				
Size	6 Sect. Part No. (Set)	8 Sect. Part No. (Set)	10 Sect. Part No. (Set)	12 Sect. Part No. (Set)
0	2206200068	2206200004	2206200001	-
0 – 1 ½	2206200067 -	2206200063 2206200014 **	2206200062 -	2206200061 2206200018 **
0 - 2	-	-	2206200146	2206200147
2	2206200071 -	2206200012 2206200005 **	2206200017 -	2206200019 2206200015 **
2 – 3	2206200070 -	2206200054 2206200006 **	2206200055 2206200003 **	2206200056 2206200016 **
3	12206200038	2206200009	2206200010	2206200011

Loadmaster – SpeedLine -Standard				
Size	6 Sect. Part No. (Set)	8 Sect. Part No. (Set)	10 Sect. Part No. (Set)	12 Sect. Part No. (Set)
0-1	2206200117	2206200116	2206200114	2206200112
¾"	2206200125	2206200124	2206200122	2206200120
0 – 1 ½	2206200138	2206200063	2206200062	2206200061
1	2206200133	2206200132	2206200130	2206200128
0 – 2	-	-	2206200146	2206200147
2	2206200106	2206200012	2206200017	2206200019
2 – 3	2206200142	2206200054	2206200055	2206200056
3	2206200086	2206200009	2206200010	2206200011

** use material without unmachined cast since 07-2017



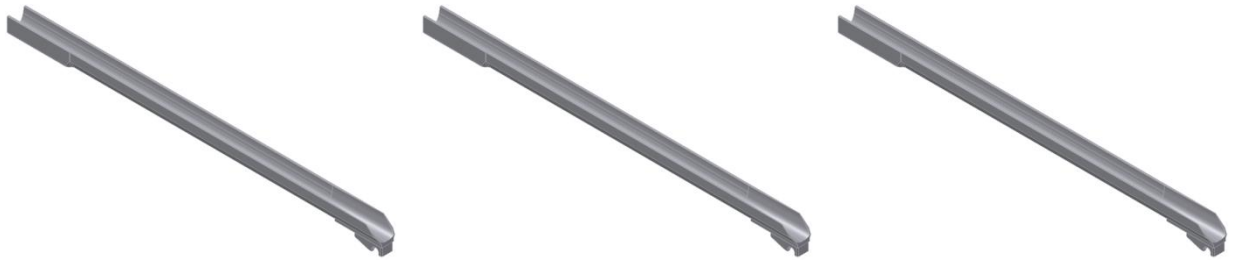
Loadmaster – SpeedLine –UNI I-III**

Size	6 Sect. Part No. (Set)	8 Sect. Part No. (Set)	10 Sect. Part No. (Set)	12 Sect. Part No. (Set)
UNI I 1/2" - 7/8"	2206200179	2206200177	2206200176	2206200174
UNI II 3/4" - 1 1/2"	2206200164	2206200162	2206200160	2206200158
UNI III 1 3/8" - 2"	2206200172	2206200170	2206200168	2206200166

*UNI Troughs must be combined with the same size of UNI Deflectors

**To achieve optimal results, UNI Trough and UNI Deflectors (in the same size) must be combined

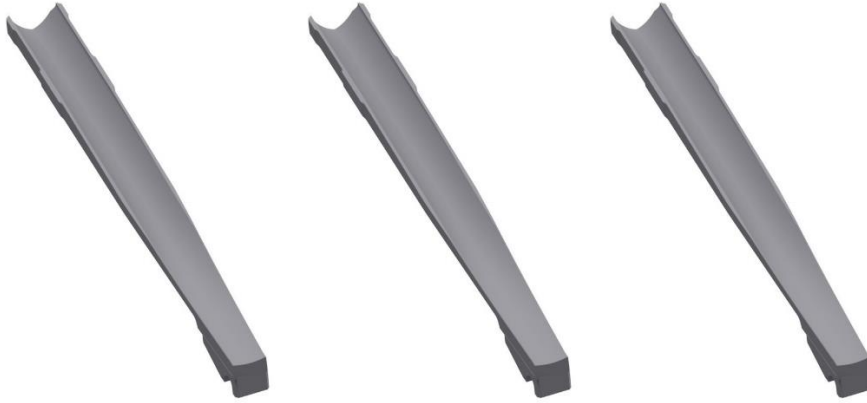
TROUGHS SET – TG



H92				
Size	6 Sect. Part No. (Set)	8 Sect. Part No. (Set)	10 Sect. Part No. (Set)	12 Sect. Part No. (Set)
0	-	2206200029 **	2206200021 **	-
	-	-	-	-
0 – 1 ½	-	2206200066	2206200065	2206200064
	-	-	2206200022 **	-
0 - 2	-	2206200145	2206200144	2206200143
2	-	2206200020	2206200024	2206200059
	-	2206200031 **	2206200023 **	-
2 – 3	-	-	2206200025	2206200060
3	-	-	-	2206200069

Loadmaster – SpeedLine				
Size	6 Sect. Part No. (Set)	8 Sect. Part No. (Set)	10 Sect. Part No. (Set)	12 Sect. Part No. (Set)
0 – 1	2206200098	2206200097	2209200091	2206200090
3/4	2206200101	2206200100	2206200094	2206200096
1	2206200103	2206200102	2206200092	2206200093
0 – 1 ½	2206200073	2206200066	2206200065	2206200064
0 – 2	-	2206200145	2206200144	2206200143
2	2206200074	2206200020	2206200024	2206200059
2 – 3	2206200075	2206200072	2206200025	2206200060
3	2206200109	2206200108	2206200107	2206200069

** use material without unmachined cast since 04-2017



Loadmaster – SpeedLine –UNI I-III*^{**}

Size	6 Sect. Part No. (Set)	8 Sect. Part No. (Set)	10 Sect. Part No. (Set)	12 Sect. Part No. (Set)
UNI I 1/2" - 7/8"	2206200180	2206200178	2206200157	2206200175
UNI II 3/4" - 1 1/2"	2206200165	2206200163	2206200161	2206200159
UNI III 1 3/8" - 2"	2206200173	2206200171	2206200169	2206200167

*UNI Troughs must be combined with the same size of UNI Deflectors

**To achieve optimal results, UNI Trough and UNI Deflectors (in the same size) must be combined

DEFLECTOR SET – SG



H92 – 6 ¼" Machine

Size	6 Sect. Part No. (Set)	8 Sect. Part No. (Set)	10 Sect. Part No. (Set)	12 Sect. Part No. (Set)
1 ½"	-	2206260024	2206260023	2206260022
1 ⅝"	-	2206260021	2206260020	2206260019
1 ¾"	-	2206260018	2206260017	2206260016
1 ⅞"	-	2206260015	2206260014	2206260013
2"	-	2206260012	2206260011	2206260010
Holder Set 6 ¼"	-	2206142100	2206142000	2206142200

H92 – 5" Machine

Size	6 Sect. Part No. (Set)	8 Sect. Part No. (Set)	10 Sect. Part No. (Set)	12 Sect. Part No. (Set)
1 ⅜"	-	-	2206250032	2206270047
1 ½"	-	2206250075	2206250076	2206270050
1 ⅝"	-	2206250071	2206250065	-
1 ¾"	2206250069	2206250072	2206250066	2206270049
1 ⅞"	-	2206250073	2206250067	-
2"	2206250035	2206250074	2206250068	-
Holder Set 5"	2206141200	2206141100	2206141000	2206141300

Loadmaster – SpeedLine				
Size	6 Sect. Part No. (Set)	8 Sect. Part No. (Set)	10 Sect. Part No. (Set)	12 Sect. Part No. (Set)
5/8"	2206270103	2206270101	2206270098	2206270096
3/4"	2206270111	2206270109	2206270107	2206270105
7/8"	2206270116	2206270115	2206270114	2206270113
1	2206270120	2206270119	2206270118	2206270117
1 1/8"	2206270124	2206270123	2206270122	2206270121
1 1/4"	2206270083	2206270082	2206270081	2206270071
1 3/8"	2206270088	2206270086	2206270084	2206270068
1 1/2"	2206270059	2206270058	2206270057	2206270052
1 5/8"	2206270131	2206270129	2206270127	2206270125
1 3/4"	2206270095	2206270094	2206270093	2206270069
1 7/8"	2206270154	2206270151	2206270148	2206270145
2"	2206270056	2206270055	2206270054	2206270053

DEFLECTOR SET – SG+



Figure 1 with Adap.Set

Figure 2 without Adap. Set

H92 – 6 ¼" Machine				
Size	6 Sect. Part No. (Set)	8 Sect. Part No. (Set)	10 Sect. Part No. (Set)	12 Sect. Part No. (Set)
2 1/8"	2206260074	2206260073	2206270070	2206260072
2 ¼"	2206260047	2206260046	2206260045	2206260044
2 ½"	2206260043	2206260042	2206260041	2206260040
2 ¾"	2206260033	2206260032	2206260031	2206260030
Adap.Set 2 ¼"-2 ¾"	2206250096**	2206250094**	2206250093**	2206250092**
Holder Set 2 1/8"	-	-	-	-
Hold. Set 2 ¼"-2 ¾"	-	-	-	2206151200

H92 – 5" Machine				
Size	6 Sect. Part No. (Set)	8 Sect. Part No. (Set)	10 Sect. Part No. (Set)	12 Sect. Part No. (Set)
2 1/8"	2206260062	2206260075	2206270051	2206270045
2 ¼"	2206260060	2206260078	2206260077	2206260076
2 ½"	2206260061	2206260081	2206260080	2206260079
2 ¾"	2206260071	2206260084	2206260083	2206260082
Adap.Set 2 ¼"-2 ¾"	2206250096**	2206250094**	2206250093**	2206250092**
Holder Set 2 1/8"	-	-	-	2206151000
Hold. Set 2 ¼"- 2 ¾"	-	-	-	-

Loadmaster – SpeedLine 6 ¼” Machine

Size	6 Sect. Part No. (Set)	8 Sect. Part No. (Set)	10 Sect. Part No. (Set)	12 Sect. Part No. (Set)
2 1/8”	2206260050	2206260049	2206260048	2206260034
2 ¼”	2206260004	2206260003	2206260002	2206260001
2 ½”	2206260008	2206260007	2206260006	2206260005
2 ¾”	2206260010	2206260109	2206260108	2206260009
Adap.Set 2 ¼”-2 ¾”	2206250096**	2206250094**	2206250093**	2206250092**
Holder Set 2 1/8”	-	-	-	2206151300
Hold. Set 2 ¼”-2 ¾”	-	-	-	2206151400

Loadmaster – SpeedLine 5” Machine

Size	6 Sect. Part No. (Set)	8 Sect. Part No. (Set)	10 Sect. Part No. (Set)	12 Sect. Part No. (Set)
2 1/8”	2206260057	2206260056	2206260055	2206260039
2 ¼”	2206260054	2206260053	2206260052	2206260051
2 ½”	2206260038	2206260037	2206260036	2206260035
2 ¾”	2206260059	2206260058	2206250043	2206250042
Adap.Set 2 ¼”-2 ¾”	2206250096**	2206250094**	2206250093**	2206250092 **
Holder Set 2 1/8”	-	-	-	-
Hold. Set 2 ¼”-2 ¾”	-	-	-	2206151100

** only use with Trough Size 4, no use with Trough Size 5

DEFLECTOR SET – DG



H92				
Size	6 Sect. Part No. (Set)	8 Sect. Part No. (Set)	10 Sect. Part No. (Set)	12 Sect. Part No. (Set)
5/8"	-	2206250022	2206250027	-
3/4"	2206250090	2206250023	2206250028	-
7/8"	2206250091	2206250008	2206250001	2206250078
1"	2206250034	2206250009	2206250002	2206250077
1 1/8"	2206260025	2206250010	2206250003	2206250036
1 1/4"	2206260026	2206250011	2206250004	2206250037
1 3/8"	2206260028	2206250012	2206250005	2206250038
1 1/2"	2206260027	2206250013	2206250006	2206250039
1 5/8"	-	2206250014	2206250007	2206250040
1 3/4"	2206250102	2206250024	2206250029	2206250041
1 7/8"	-	2206250025	2206250030	2206250079
2"	-	2206250026	2206250031	-

Loadmaster – SpeedLine				
Size	6 Sect. Part No. (Set)	8 Sect. Part No. (Set)	10 Sect. Part No. (Set)	12 Sect. Part No. (Set)
5/8"	2206270104	2206270102	2206270099	2206270097
3/4"	2206270112	2206270110	2206270108	2206270106
7/8"	2206270034	2206270023	2206270012	2206270007
1"	2206270035	2206270024	2206270013	2206270003
1 1/8"	2206270036	2206270025	2206270014	2206270002
1 1/4"	2206270037	2206270026	2206270015	2206270001
1 3/8"	2206270038	2206270027	2206270016	2206270006
1 1/2"	2206270039	2206270028	2206270017	2206270005
1 5/8"	2206270040	2206270029	2206270018	2206270008
1 3/4"	2206270041	2206270030	2206270019	2206270004
1 7/8"	2206270155	2206270152	2206270149	2206270146
2"	2206270143	2206270141	2206270139	2206270137



Loadmaster – SpeedLine –UNI I-III*+**				
Size	6 Sect. Part No. (Set)	8 Sect. Part No. (Set)	10 Sect. Part No. (Set)	12 Sect. Part No. (Set)
UNI I ½”- 7/8”	2206260106	2206260104	2206260103	2206260101
UNI II ¾”- 1 ½”	2206260090	2206260088	2206260086	2206260089
UNI III 1 3/8”-2”	2206260097	2206260095	2206260093	2206260099

*UNI Deflectors must be combined with the same size of UNI Troughs

**To achieve optimal results, UNI Trough and UNI Deflectors (in the same size) must be combined

DEFLECTOR SET – TG



H92				
Size	6 Sect. Part No. (Set)	8 Sect. Part No. (Set)	10 Sect. Part No. (Set)	12 Sect. Part No. (Set)
5/8"	-	2206250057	2206250044	-
3/4"	-	2206250058	2206250045	2206270046
7/8"	-	2206250059	2206250046	2206250015
1"	-	2206250060	2206250047	2206250100
1 1/8"	-	2206250061	2206250048	2206250052
1 1/4"	-	2206250062	2206250049	2206250053
1 3/8"	-	2206250063	2206250050	-
1 1/2"	-	2206250064	2206250051	-

Loadmaster – SpeedLine				
Size	6 Sect. Part No. (Set)	8 Sect. Part No. (Set)	10 Sect. Part No. (Set)	12 Sect. Part No. (Set)
5/8"	2206270075	2206270074	2206270073	2206270072
3/4"	2206270077	2206270076	2206270063	2206270046
7/8"	2206270079	2206270078	2206270067	2206270066
1"	2206270042	2206270031	2206270020	2206270009
1 1/8"	2206270043	2206270032	2206270021	2206270010
1 1/4"	2206270044	2206270033	2206270022	2206270011
1 3/8"	2206270089	2206270087	2206270085	2206270048
1 1/2"	2206270092	2206270091	2206270080	2206270090
1 5/8"	2206270132	2206270130	2206270128	2206270126
1 3/4"	2206270136	2206270135	2206270134	2206270133
1 7/8"	2206270156	2206270153	2206270150	2206270147
2"	2206270144	2206270142	2206270140	2206270138



Loadmaster – SpeedLine –UNI I-III*+**				
Size	6 Sect. Part No. (Set)	8 Sect. Part No. (Set)	10 Sect. Part No. (Set)	12 Sect. Part No. (Set)
UNI I 1/2" - 7/8"	2206260107	2206260105	2206260070	2206260102
UNI II 3/4" - 1 1/2"	2206260091	2206260100	2206260087	2206260085
UNI III 1 3/8" - 2"	2206260098	2206260096	2206260094	2206260092

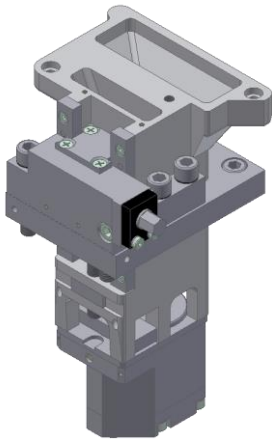
*UNI Deflectors must be combined with the same size of UNI Troughs

**To achieve optimal results, UNI Trough and UNI Deflectors (in the same size) must be combined

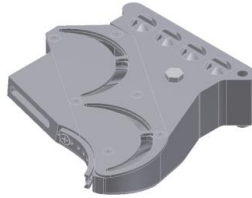
SECTION 2.

BLANK MOULD COOLING

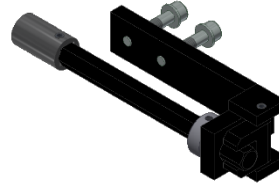
BLANK MOULD COOLING – 4 1/4“ DG NNPB – AXIAL MOULD COOLING (AC)



Cooling foot



Cooling piece

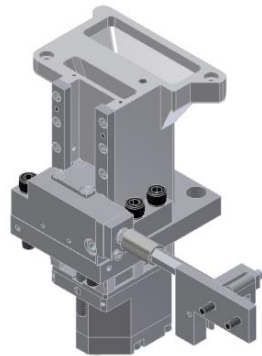


High Adjustment

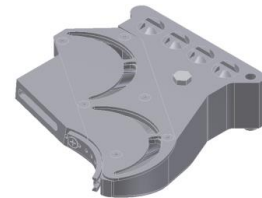
Description	Part No.
Cooling foot RH	2242102000
Cooling foot LH	2242102100
Cooling piece RH	2242111000
Cooling piece LH	2242111100
High Adjustment	2101428100
Distance Piece for High Adjustment	2101428110

BLANK MOULD COOLING – 5" DG

NNPB – AXIAL MOULD COOLING (AC)



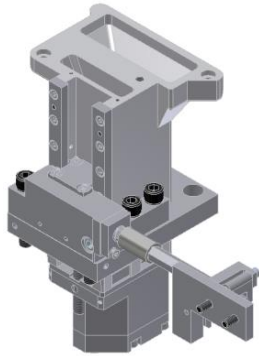
Cooling foot



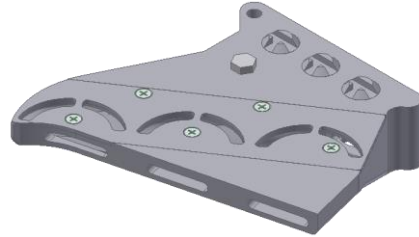
Cooling piece

Description	Part No.
Axial cooling RH cpl. with cooling foot, cooling piece Ø 112 mm	2101429000
Axial cooling LH cpl. with cooling foot, cooling piece Ø 112 mm	2101429100
Cooling foot RH	2242101000
Cooling foot LH	2242101100
Cooling piece RH, Ø 112 mm	2101429500
Cooling piece LH, Ø 112 mm	2101429600
Cooling piece RH, Ø 104 mm	2101428500
Cooling piece LH, Ø 104 mm	2101428600

BLANK MOULD COOLING – 85MM TG NNPB – AXIAL MOULD COOLING (AC)



Cooling foot

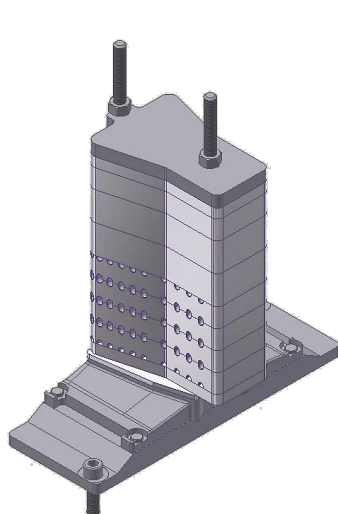


Cooling piece

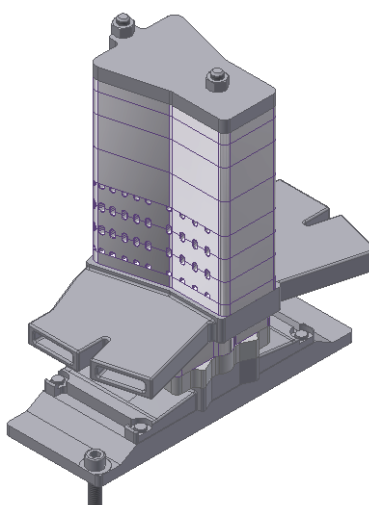
Description	Part No.
Cooling foot RH	2242101000
Cooling foot LH	2242101100
Cooling piece RH	2101428700
Cooling piece LH	2101428800

BLANK MOULD COOLING – 4 1/4“ DG

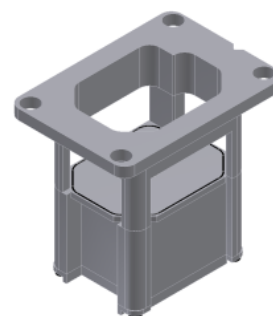
BB – STACK COOLING RADIAL – WITH HI-INTERMITTEND VALVE AND NECKRING COOLING



Stack cooling



with neckring cooling



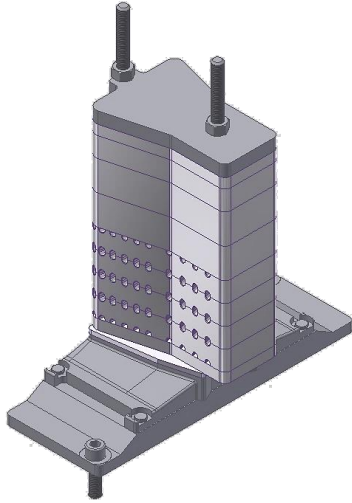
Intermit. Valve

Description	Part No. w/o valve	Part No. with valve
Stack cooling without neckring cooling Middle*	2221031100	2221031400
Stack cooling without neckring cooling RH*	2221031200	2221031500
Stack cooling without neckring cooling LH*	2221031300	2221031600
Stack cooling with neckring cooling Middle	2221012100	2221012400
Stack cooling with neckring cooling RH	2221012200	2221012500
Stack cooling with neckring cooling LH	2221012300	2221012600
Intermit. Valve RH (for separate timing LH / RH)*	215F216100	
Intermit. Valve LH (for separate timing LH / RH)*	215F216000	
Intermit. Valve RH*	2101216100	
Intermit. Valve LH*	2101216000	

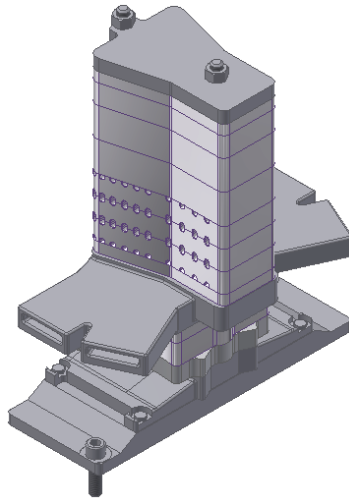
*also usable for 5" DG

BLANK MOULD COOLING – 5“ DG

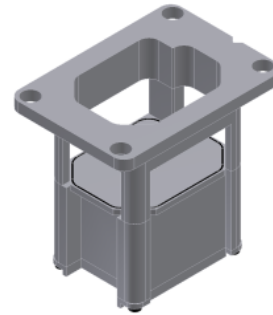
BB – STACK COOLING RADIAL – WITH HI-INTERMITTEND VALVE AND NECKRING COOLING



Stack cooling



with neckring cooling



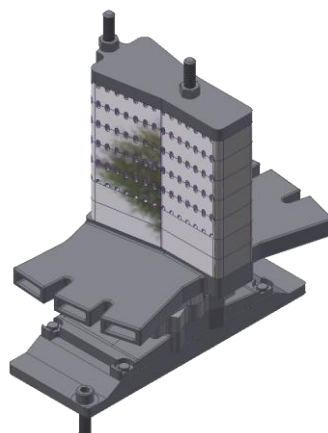
Intermit. Valve

Description	Part No. w/o valve	Part No. with valve
Stack cooling without neckring cooling Middle*	2221031100	2221031400
Stack cooling without neckring cooling RH*	2221031200	2221031500
Stack cooling without neckring cooling LH*	2221031300	2221031600
Stack cooling with neckring cooling Middle	2221032100	2221032400
Stack cooling with neckring cooling RH	2221032200	2221032500
Stack cooling with neckring cooling LH	2221032300	2221032600
Intermit. Valve RH (for separate timing LH / RH)*	215F216100	
Intermit. Valve LH (for separate timing LH / RH)*	215F216000	
Intermit. Valve RH*	2101216100	
Intermit. Valve LH*	2101216000	

*also usable for 4 ¼” DG

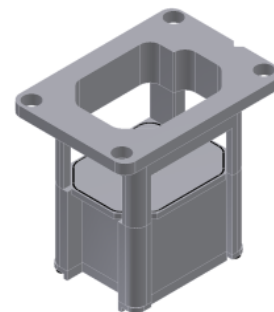
BLANK MOULD COOLING – 85MM TG

BB – STACK COOLING RADIAL – WITH HI-INTERMITTEND VALVE AND NECKRING COOLING



Stack cooling

with neckring cooling



Intermit. Valve

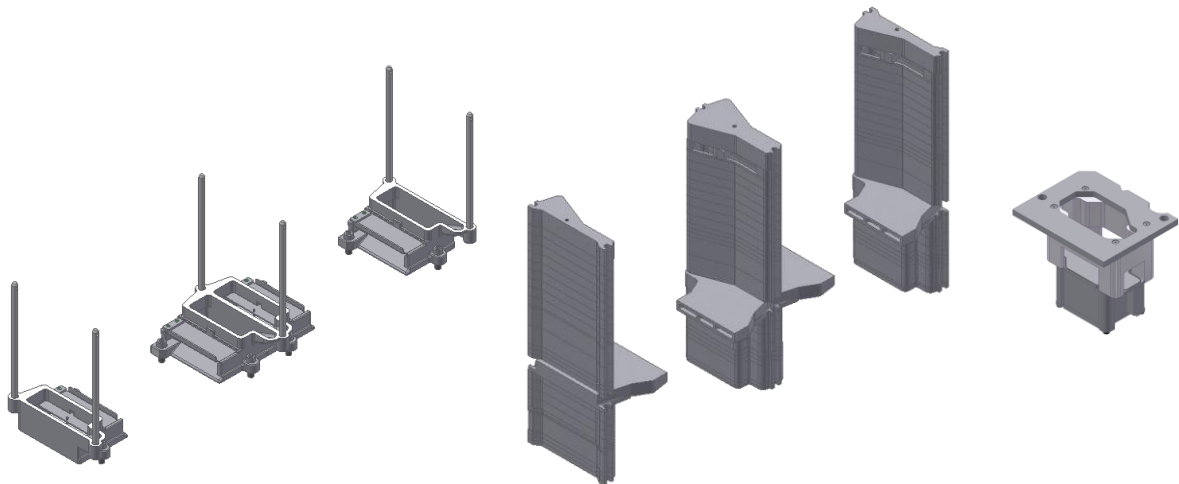
Description	Part No. w/o valve	Part No. with valve
Stack cooling without neckring cooling Middle*		
Stack cooling without neckring cooling RH*		
Stack cooling without neckring cooling LH*		
Stack cooling with neckring cooling Middle	2221091000	
Stack cooling with neckring cooling RH	2221091100	
Stack cooling with neckring cooling LH	2221091200	
Intermit. Valve RH (for separate timing LH / RH)*	215F216100	
Intermit. Valve LH (for separate timing LH / RH)*	215F216000	
Intermit. Valve RH*	2101216100	
Intermit. Valve LH*	2101216000	

BLANK MOULD COOLING – 5“ DG – HIFLOW
PB – HIFLOW DG WITH OR WITHOUT NECK RING COOLING



HIFLOW
 Blank mould cooling, center

Description	Part No.
Blank mould cooling, center, with neckring cooling Cpl. cooling set-up incl. valve 2101213100	2221500400
Blank mould cooling RH, with neckring cooling Cpl. cooling set-up incl. valve 2101213100	2221510400
Blank mould cooling LH, with neckring cooling Cpl. cooling set-up incl. valve 2101213100	2221520400
Blank mould cooling, center, w/o neckring cooling Cpl. cooling set-up incl. valve 2101213100	2221500450
Blank mould cooling RH, w/o neckring cooling Cpl. cooling set-up incl. valve 2101213100	2221510450
Blank mould cooling LH, w/o neckring cooling Cpl. cooling set-up incl. valve 2101213100	2221520450

BLANK MOULD COOLING – 5 1/2” DG**BB – STACK COOLING RADIAL – WITH NECKRING COOLING**

Wind Nozzle base

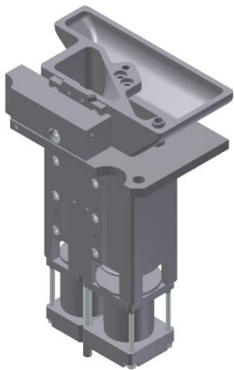
neckring cooling, cooling pieces and
spacer

Intermit. Valve

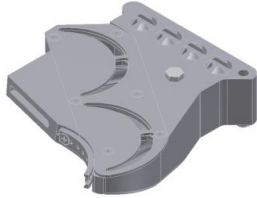
Description	Part No. w/o valve
Wind nozzle base LH, Middle, RH for 6 sections	2106217700
Neckring cooling, cooling pieces and spacer for 6 sections	2106217500
Wind nozzle base LH, Middle, RH for 8 sections	2108217700
Neckring cooling, cooling pieces and spacer for 8 sections	2108217500
Intermit. Valve RH	2101216300
Intermit. Valve LH	2101216400

BLANK MOULD COOLING – 6 ¼“ DG

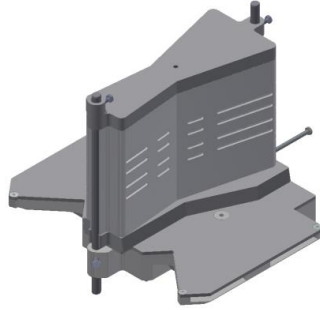
NNPB – AXIAL MOULD COOLING (AC) WITH HEIGHT ADJUSTMENT



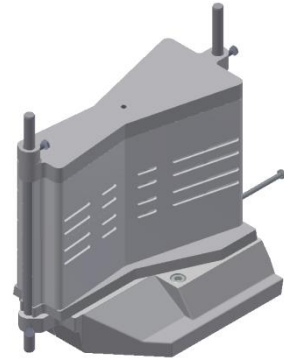
AC cooling foot



Cooling piece



Radial stack cooling with neckring cooling



Radial stack cooling without neckring cooling

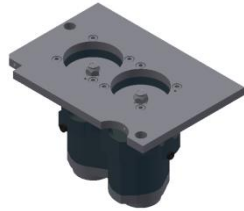
Description	Part No.
AC cooling foot RH	2102428800
AC cooling foot LH	2102428900
AC gear mechanism RH	2102428600
AC gear mechanism LH	2102428700
Mounting kit for gear height adjustment	2104428000
Cooling piece RH Ø 126 mm	2102421000
Cooling piece LH Ø 126 mm	2102421100
Cooling piece RH Ø 149 mm	2102421200
Cooling piece LH Ø 149 mm	2102421300
Cooling piece RH Ø 112 mm	2102421400
Cooling piece LH Ø 112 mm	2102421500
Cooling piece RH Ø 103.2 mm	2102421600
Cooling piece LH Ø 103.2 mm	2102421700
Cooling piece RH Ø 107 mm	2102429400
Cooling piece LH Ø 107 mm	2102429500
Radial cooling with neckring cooling Middle (cooling piece: 213F218500 & 213F218300)	213F218000
Radial cooling with neckring cooling RH (cooling piece: 213F218500)	213F218100
Radial cooling with neckring cooling LH (cooling piece: 213F218400)	213F218200
Radial cooling without neckring cooling Middle	2221071000
Radial cooling without neckring cooling RH	2221071100
Radial cooling without neckring cooling LH	2221071200

*Air supply (cooling foot) can be used with stack cooling SG, DG & TG.

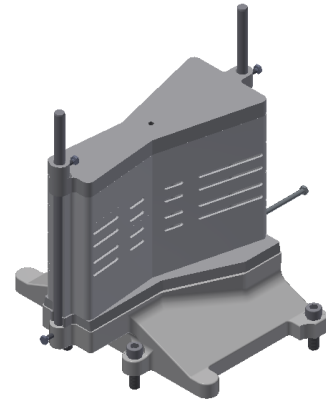
Notice: Stack Cooling Pieces cannot be used on TG Machine

BLANK MOULD COOLING – 6 ¼“ DG

NNPB – RADIAL MOULD COOLING (RC) WITH DOUBLE VALVE



Double valve



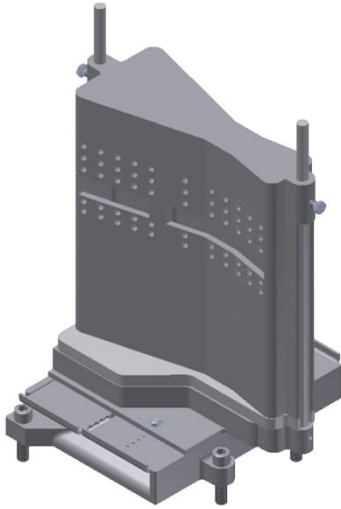
Radial stack cooling

Description	Part No.
Interm. double valve LH	213F212600
Interm. double valve RH	213F212700
Radial stack cooling middle	2221071300
Radial stack cooling RH	2221071400
Radial stack cooling LH	2221071500

*Air supply can be used with stack cooling SG, DG & TG. Stack pieces can be used on blow mould side aswell.

Notice: Stack Cooling Pieces cannot be used on TG Machine

BLANK MOULD COOLING – 6 ¼“ DG
BB – RADIAL MOULD COOLING (RC) WITH DOUBLE VALVE



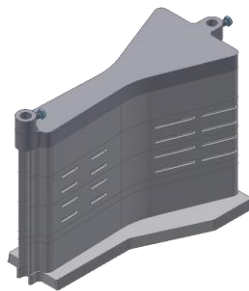
Stack cooling



Double valve

Description	Part No.
Stack Cooling for 6 Sections incl. cooling pieces	2106218000
Stack Cooling for 8 Sections incl. cooling pieces	2108218000
Stack Cooling for 10 Sections incl. cooling pieces	2110218000
Stack Cooling for 12 Sections incl. cooling pieces	2112218000
Adapter Plate Middle	2102420101
Adapter Plate RH/LH	2102420102

Notice: Stack Cooling Pieces cannot be used on TG Machine (TG Pieces see below)



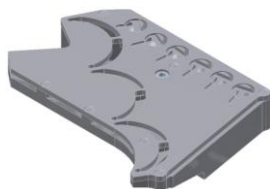
Description	Part No.
Stack Radial cooling conversion parts TG Middle	213F219600
Stack Radial cooling conversion parts TG RH	213F219800
Stack Radial cooling conversion parts TG LH	213F219700

BLANK MOULD COOLING – 4 ¼“ TG

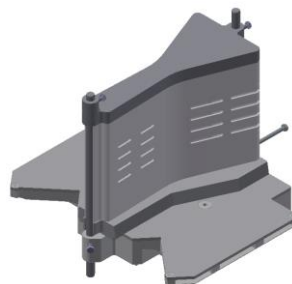
NNPB – AXIAL MOULD COOLING (AC) WITH HEIGHT ADJUSTMENT



Axial cooling foot



Axial cooling piece



Radial cooling with neckring cooling



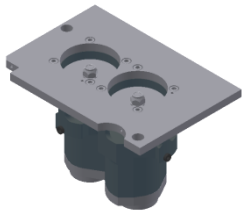
Radial cooling without neckring cooling

Description	Part No.
Axial cooling foot RH	2102428800
Axial cooling foot LH	2102428900
Axial cooling gear RH	2102428600
Axial cooling gear LH	2102428700
Mounting kit for gear height adjustment	2104428000
Mounting kit for gear height adjustment for use with new box type	2104428100
Cooling piece RH	2104429400
Cooling piece LH	2104429500
Radial cooling with neckring cooling Middle (cooling piece: 213F219500 & 213F219300) **	213F219000
Radial cooling with neckring cooling RH (cooling piece: 213F219500) **	213F219100
Radial cooling with neckring cooling LH (cooling piece: 213F219400) **	213F219200
Radial cooling without neckring cooling Middle **	2221081000
Radial cooling without neckring cooling RH **	2221081100
Radial cooling without neckring cooling LH **	2221081200

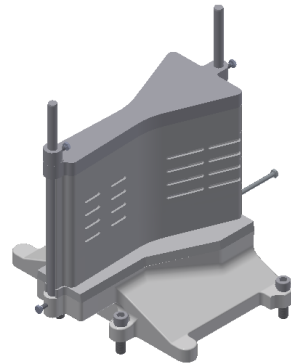
*Air supply can be used with stack cooling SG, DG & TG.

** Notice: Stack Cooling Pieces can be used on DG Machine, neckring cooling cannot used on DG Machine

BLANK MOULD COOLING – 4 1/4“ TG NNPB – RADIAL MOULD COOLING (RC) WITH DOUBLE VALVE



Double valve



Radial stack cooling

Description	Part No.
Interm. double valve LH	213F212600
Interm. double valve RH	213F212700
Radial stack cooling middle	2221081300
Radial stack cooling RH	2221081400
Radial stack cooling LH	2221081500

*Air supply can be used with stack cooling SG, DG & TG. Stack pieces can be used on blow mould side aswell.

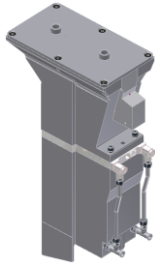
Notice: Stack Cooling Pieces can be used on DG Machine

SECTION 3.

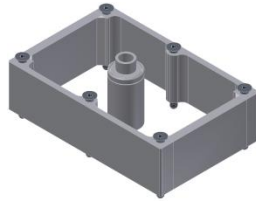
BLOW MOULD COOLING

BLOW MOULD COOLING – VAS – 5” MACHINE

VERTICAL AIR STREAM (VAS) WITH V-INSERT CPL. WITH BOTTOM PLATE



Vertical Air Stream



Installation kit 70mm



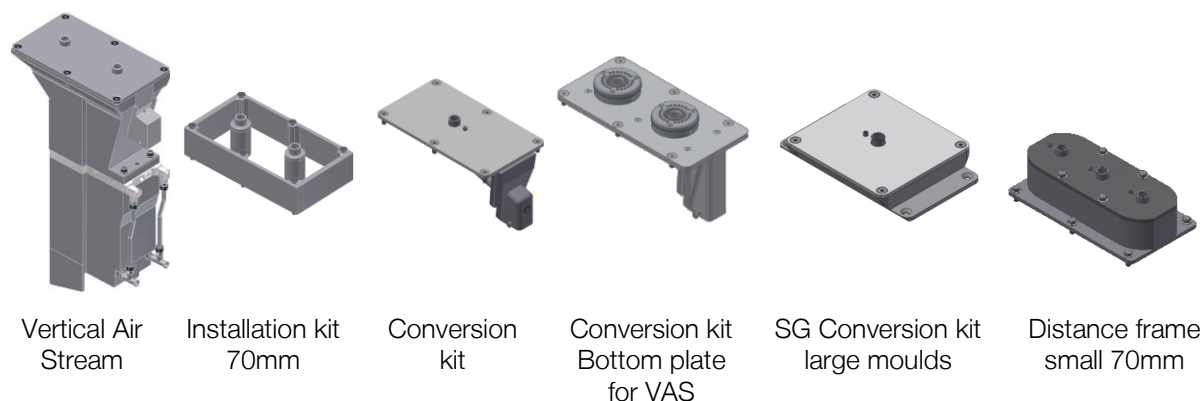
Conversion kit

CD	Description	Part No.
4 ¼” SG	VAS 4 ¼” SG - V-insert (incl. Butterfly valve)	2214110013
	Conversion kit to 4 ¼” SG	2214110015
	Installation kit SG 70 mm	2214122800
4 ¼” DG	VAS 4 ¼” DG - V-insert (incl. Butterfly valve)	2214110040
	VAS 4 ¼” DG - V-insert – direct flow (incl. Butterfly valve)	2214110046
	VAS 4 ¼” DG - V-insert – direct flow (without Butterfly valve)	2214110052
	Conversion Kit to 4 ¼” DG	2214110029
5” SG	Installation kit SG 70 mm	2214122800
	Conversion kit to 5” DG	2214110014
	Conversion kit to 5” SG	2214110025
5” DG	VAS 5” DG - V-insert (incl. Butterfly valve)	2214110041
	VAS 5” DG - V-insert - direct flow (incl. Butterfly valve)	2214110047
	VAS 5” DG - V-insert - direct flow (w./o. Butterfly valve)	2214110053
	Installation kit DG 70 mm	2214122600
	VAS 5” DG V-insert direct flow w./o. Butterfly valve divided upper part	2214110058
85mm TG	VAS V-insert (incl. Butterfly valve)	2214110045
	VAS V-insert – direct flow (incl. Butterfly valve)	2214110051
	VAS V-insert – direct flow (without Butterfly valve)	2214110057
	Installation kit TG 70 mm	2214123300
	Conversion kit to 85mm TG	2214110028

Height Adjustment and Spacer on request

BLOW MOULD COOLING – VAS – 6 1/4” MACHINE

VERTICAL AIR STREAM (VAS) WITH V-INSERT CPL. WITH BOTTOM PLATE

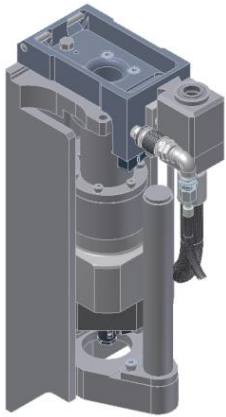


CD	Description	Part No.
5 1/2" SG	Conversion kit to 5 1/2" SG	2214110026
5 1/2" DG	VAS 5 1/2" DG - V-insert (incl. Butterfly-valve)	2214110042
	VAS 5 1/2" DG - V-insert – direct flow (incl. Butterfly valve)	2214110048
	VAS 5 1/2" DG - V-insert – direct flow (without Butterfly valve)	2214110054
	Installation kit 70 mm DG	2214122700
	Conversion kit Bottom plate for VAS	2214112300
6 1/4" SG	Installation kit 70 mm SG	2214122900
	Conversion kit to 6 1/4" SG	2214110027
	Conversion kit 6 1/4" SG for 8 1/2" (large moulds)	2214124000
6 1/4" DG	VAS 6 1/4" DG - V-insert (incl. Butterfly valve)	2214110043
	VAS 6 1/4" DG - V-insert – direct flow (incl. Butterfly valve)	2214110049
	VAS 6 1/4" DG - V-insert – direct flow (without Butterfly valve)	2214110055
	Installation kit 70 mm DG	2214122700
	Conversion kit Bottom plate for VAS	2214112000
	Conversion kit to 6 1/4" DG	2214110011
4 1/4" TG	Conversion kit to 4 1/4" TG	2214110010
	VAS 4 1/4" TG - V-insert (incl. Butterfly valve)	2214110044
	VAS 4 1/4" TG - V-insert – direct flow (incl. Butterfly valve)	2214110050
	VAS 4 1/4" TG - V-insert – direct flow (without Butterfly valve)	2214110056
	Conversion kit Bottom plate for VAS – V-Form	2214111800
	Conversion kit Bottom plate for VAS – straight-Form	2214112100
	Installation kit 70 mm TG	2214122200
VAS distance frame small 70mm for small jars	2214123200	

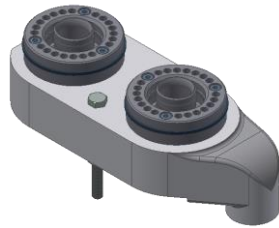
Height Adjustment and Spacer on request

BLOW MOULD COOLING – BOTTOM MECHANISM

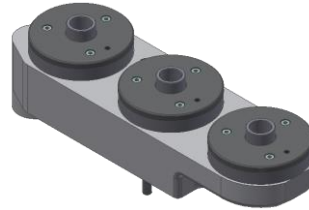
AXIAL MOULD COOLING (AC) BLOW MOULD BOTTOM MECHANISM WITH BOTTOM ADAPTER



Blow mould bottom mechanism



Blow mould bottom adapter



Conversion kit for VAS

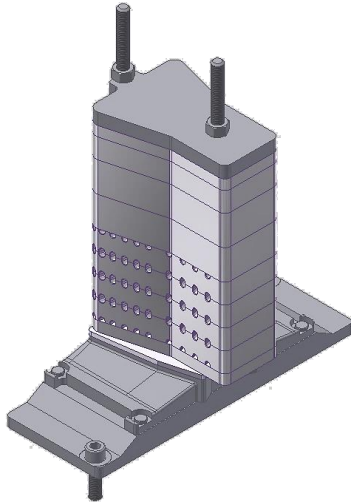


Distance kit

CD	Description	Part No.
All	blow mould bottom mechanism for Speedline	2101400800
	blow mould bottom mechanism for non-Speedline	2101400200
4 ¼" SG	Blow mould bottom adapter axial	-
4 ¼" DG	Blow mould bottom adapter axial	2101402400
5" SG	Blow mould bottom adapter axial	-
5" DG	Blow mould bottom adapter axial	2101400600
85mm TG	Blow mould bottom adapter axial	2101402500
5 ½" SG	Blow mould bottom adapter axial	-
5 ½" DG	Blow mould bottom adapter axial	2103401400
6 ¼" SG	Blow mould bottom adapter axial	-
6 ¼" DG	Blow mould bottom adapter axial	2102402000
4 ¼" TG	Blow mould bottom adapter axial	2104401000
	Conversion kit for VAS – without bottom cooling (vacuum only)	2104401100
	Distance kit 40mm for bottom plate	2104401011

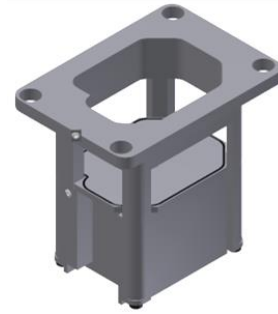
BLOW MOULD COOLING – STACK COOLING – 5” MACHINE

STACK COOLING RADIAL WITH SEPARATE INTERMITTENT VALVE



Stack Cooling

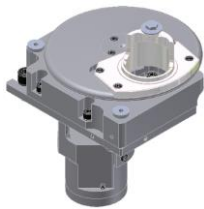
blank & blow-side stack pcs



Intermit. Valve

CD	Description	Part No. w/o valve	Part No. with valve
4 1/4" DG & 5" DG & 85mm TG	Stack Cooling unit Middle *	2221030100	2221030400
	Stack Cooling unit RH *	2221030200	2221030500
	Stack Cooling unit LH *	2221030300	2221030600
All	Intermit. Valve RH *	2101216100	
	Intermit. Valve LH *	2101216000	

BLOW MOULD COOLING – 360° - 5” MACHINE
AXIAL MOULD COOLING (AC) EQUIPPED WITH BALL BEARINGS



Air supply
(ball bearing)

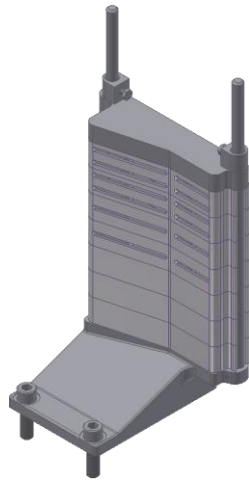


Air supply channel

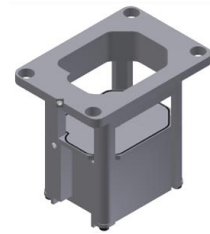
CD	Description	Part No.
4 ¼” DG	Air Supply RH Air Supply LH	
5” DG & 85mm TG	Air supply RH (cpl. with intermit. Valve)	2101418700
	Air supply LH (cpl. with intermit. Valve)	2101418800
5” DG	Air supply channel	2101416600
	Air supply channel 1”	2101416900
	Air supply channel 1 ¼”	2101416700
85mm TG	Air supply channel	In construction
	Air supply channel 1”	In construction
	Air supply channel 1 ¼”	In construction

Cooling pieces: see page “blow mould holder”

BLOW MOULD COOLING – 5” CD DG FOR ASSORTMENT STACK COOLING RADIAL WITH SEPARATE INTERMITTENT VALVE



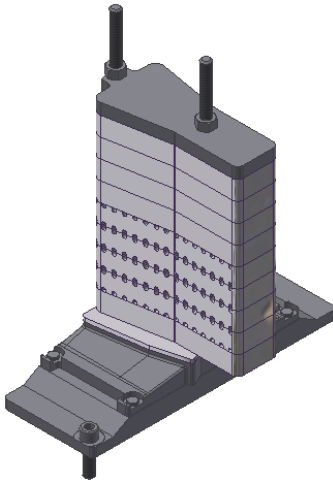
Stack Cooling
for Sortiment



Intermit. Valve

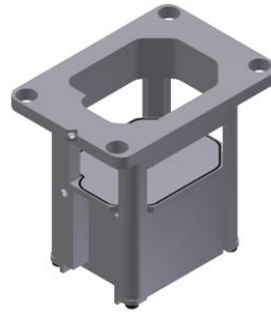
Description	Part No.
Intermit. Valve RH	2101216100
Intermit. Valve LH	2101216000
Stack cooling for 1 section (LH & RH) for assortment production (without valve)	215F214200

BLOW MOULD COOLING – STACK COOLING – 85MM TG
STACK COOLING RADIAL WITH SEPARATE INTERMITTENT VALVE



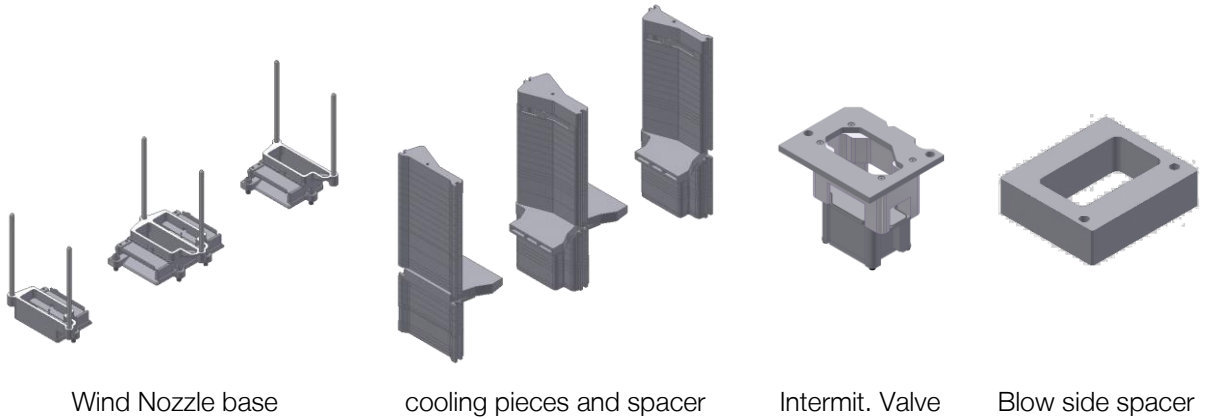
Stack Cooling

blank & blow-side stack pcs



Intermit. Valve

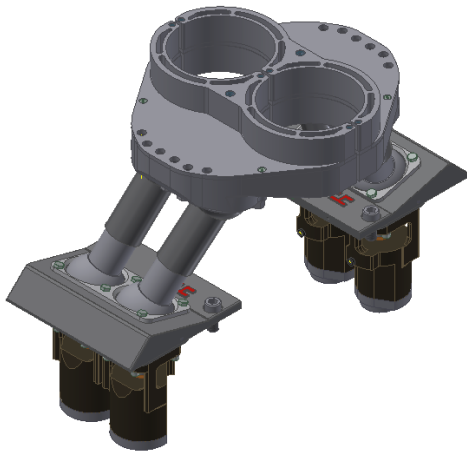
CD	Description	Part No. w/o valve	Part No. with valve
4 ¼" DG & 5" DG & 85mm TG	Stack Cooling unit Middle *	2221092000	
	Stack Cooling unit RH *	2221092000	
	Stack Cooling unit LH *	2221092000	
All	Intermit. Valve RH *	2101216100	
	Intermit. Valve LH *	2101216000	

BLOW MOULD COOLING – 5 1/2” DG**BB – STACK COOLING RADIAL**

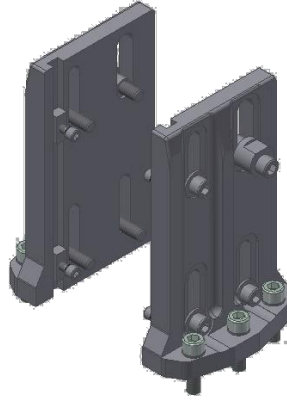
Description	Part No. w/o valve
Wind nozzle base LH, Middle, RH for 6 sections	2106217600
cooling pieces and spacer for 6 sections	2106217400
Wind nozzle base LH, Middle, RH for 8 sections	2108217600
cooling pieces and spacer for 8 sections	2108217400
Intermit. Valve RH	2101216600
Intermit. Valve LH	2101216500
Blow side spacer	2101216505

BLOW MOULD COOLING – 5 1/2” DG

360° AXIAL MOULD COOLING



RH & LH with 35mm 6” Mould Adapter



Mounting Kit RH / LH

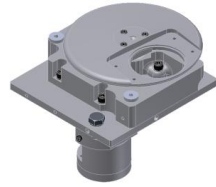


Adapter H=35mm

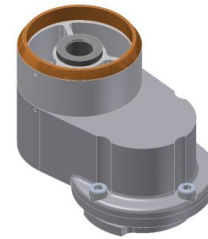
Description	Part No.
360° Axial Cooling RH / LH	2241402000
Mounting Kit RH / LH	2241402200
360° Axial Cooling Piece 5 1/2”	2241402100
Adapter H=35mm 6” Mould	2241402108
Adapter H=30mm 5 3/8” Mould	2241402109
Adapter H=15mm 5 3/8” Mould	2241402104
Adapter H=15mm 5” Mould	2241402106

BLOW MOULD COOLING – 6 ¼” CD DG

AXIAL MOULD COOLING (AC) EQUIPPED WITH BALL BEARINGS



Air supply



Air supply channel

Description	Part No.
Air supply RH (cpl. with intermitt. valve)	2102416400
Air supply LH (cpl. with intermitt. valve)	2102416500
Air supply RH (cpl. with intermitt. Valve, optimized mounting plate)	2102416800
Air supply LH (cpl. with intermitt. Valve, optimized mounting plate)	2102416900
Air supply channel	2101416600
Air supply channel 1”	2101416900
Air supply channel 1 ¼”	2101416700
Cooling Piece for 6 ¼” Moulds	2102412500
Adapter for 5” Moulds	2102414000
Mounting Parts	2102418200
Blow mould holder with cooling piece holder	2102412900

BLOW MOULD COOLING – 6 ¼” DG

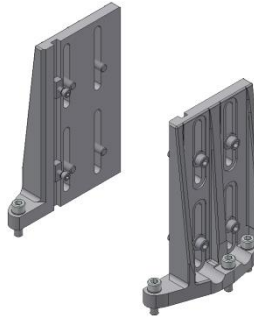
360° AXIAL MOULD COOLING



RH



LH



Mounting Kit RH / LH

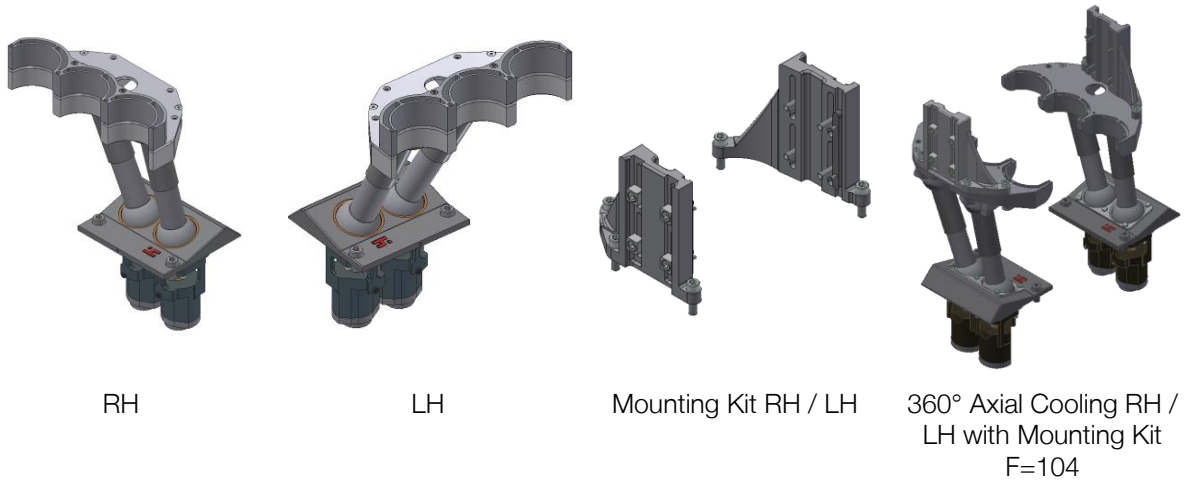


Adapter H=35mm

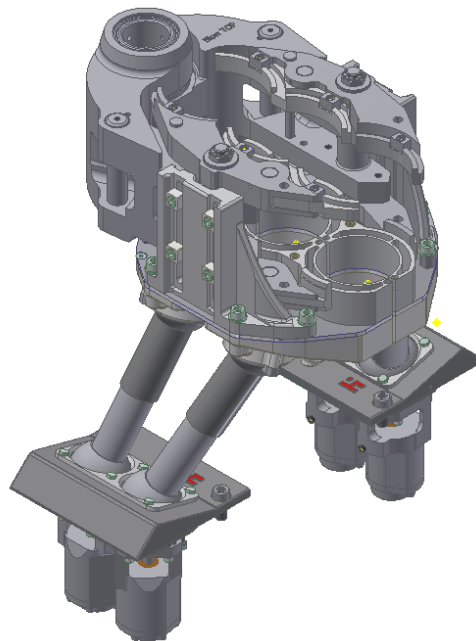
Description	Part No.
360° Axial Cooling RH with 5” Mould-adapter	2241401000
360° Axial Cooling LH with 5” Mould-adapter	2241401100
Mounting Kit RH / LH	2241400300
Adapter H=35mm	2241401300
360° Axial Cooling Piece 6 ¼” Mould	2241400100
360° Axial Cooling Piece 5” Mould	2241400400

BLOW MOULD COOLING – 4 1/4" CD TG

360° AXIAL MOULD COOLING (AC)



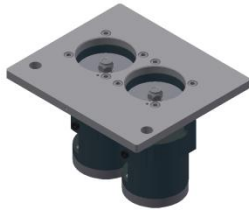
Description	Part No.
360° Axial Cooling RH F=90	2241300100
360° Axial Cooling LH F=90	2241310100
Mounting Kit RH / LH (155mm)	2241300240
360° Axial Cooling RH / LH with Mounting Kit F=104 Cooling Piece	2241300300
Cooling Piece F=90	2241300120
Cooling Piece F=104	2241300170
Mounting Kit for long Articles (273mm)	2241300190
Complete Cooling Assembly with F=90, Mounting Kit 155mm, Mould Holder 213F203700	2241301000



BLOW MOULD COOLING – 6 ¼” CD DG

STACK COOLING RADIAL

Can be used in connection with VAS



Intermittend Valve

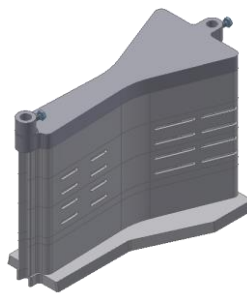


Stack Cooling incl. interm. valves

Description	Part No.
Blow Mould Cooling Intermittend Valve RH	213F212820
Blow Mould Cooling Intermittend Valve LH	213F212810
Blow Mould Cooling Center incl. interm. Valves **for 4 ¼” TG use aswell	213F212800
Blow Mould Cooling RH incl. interm. Valves **for 4 ¼” TG use aswell	213F212900
Blow Mould Cooling LH incl. interm. Valves **for 4 ¼” TG use aswell	213F213000

*Air supply can be used with stack cooling SG, DG & TG. Stack pieces can be used on blank mould side aswell.

Notice: Stack Cooling Pieces can be used on TG Machine (Other TG Pieces see below)

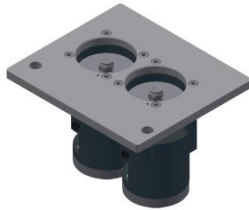


Description	Part No.
Stack Radial cooling conversion parts TG Middle	213F219600
Stack Radial cooling conversion parts TG RH	213F219800
Stack Radial cooling conversion parts TG LH	213F219700

BLOW MOULD COOLING – 4 1/4” CD TG

STACK COOLING RADIAL

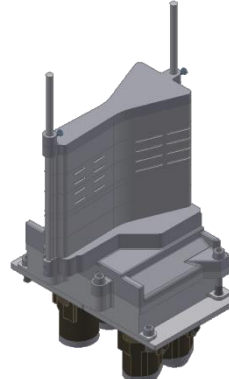
Can be used in connection with VAS



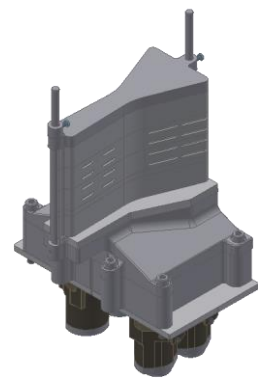
Intermittend Valve



Stack Cooling incl. intern. Valves**



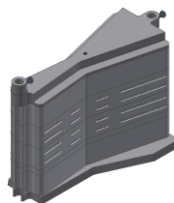
Stack Cooling incl. intern. Valves blank & blow-side stack pcs (Cast Plate)



Stack Cooling incl. intern. Valves blank & blow-side stack pcs

Description	Part No.
Blow Mould Cooling Intermittend Valve RH	213F212820
Blow Mould Cooling Intermittend Valve LH	213F212810
Blow Mould Stack Cooling Center incl. intern. Valves **for 6 1/4” DG use aswell	213F212800
Blow Mould Stack Cooling RH incl. intern. Valves **for 6 1/4” DG use aswell	213F212900
Blow Mould Stack Cooling LH incl. intern. Valves **for 6 1/4” DG use aswell	213F213000
Blow Mould Stack Cooling Center (Cast Plate) without air volume adjustment	2221081900
Blow Mould Stack Cooling RH (Cast Plate) without air volume adjustment	2221082000
Blow Mould Stack Cooling LH (Cast Plate) without air volume adjustment	2221082100
Blow Mould Stack Cooling Center (Cast Plate) without air volume adjustment	2221081600
Blow Mould Stack Cooling RH (Cast Plate) without air volume adjustment	2221081700
Blow Mould Stack Cooling LH (Cast Plate) without air volume adjustment	2221081800
Blow Mould Stack Cooling Center (Cast Plate) for small moulds (without Illustration)	2221081900
Blow Mould Stack Cooling RH (Cast Plate) for small moulds (without Illustration)	2221082000
Blow Mould Stack Cooling LH (Cast Plate) for small moulds (without Illustration)	2221082100

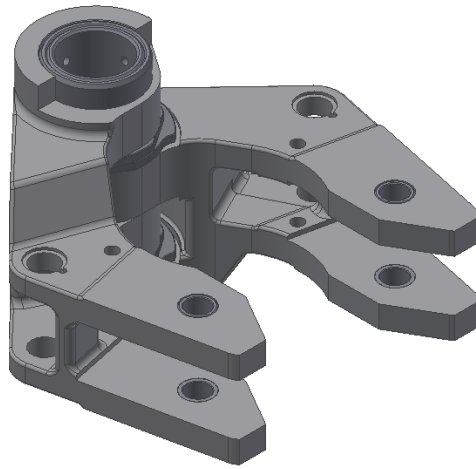
*Air supply can be used with stack cooling SG, DG & TG. Stack pieces can be used on blank mould side aswell.



Description	Part No.
Stack Radial cooling conversion parts DG Middle	213F218600
Stack Radial cooling conversion parts DG RH	213F218800
Stack Radial cooling conversion parts DG LH	213F218700

SECTION 4.

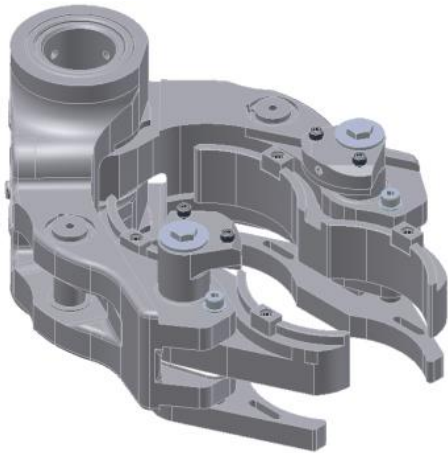
BLANK MOULD HOLDER

BLANK MOULD HOLDER – 4 1/4” CD DG

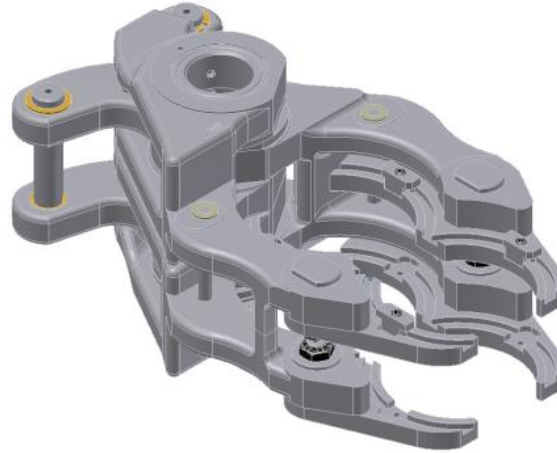
Holder No.	Assembly Ident. No.	Dimensions			
		Ø ["]	Insert Ø [mm]	H ["]	H [mm]
212F206000	212F200060				
	212F200061				

BLANK MOULD HOLDER – 5" CD DG

AXIAL & RADIAL MOULD COOLING



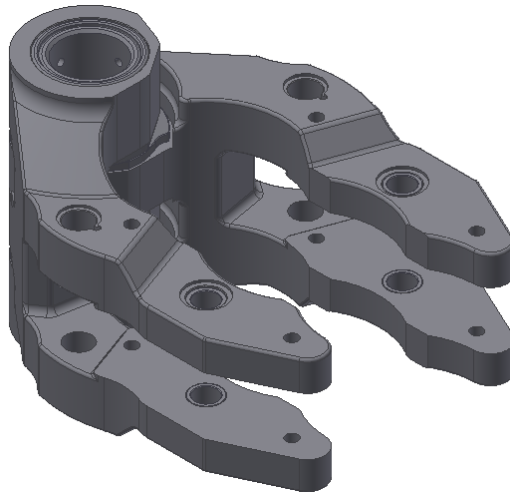
Axial



Radial

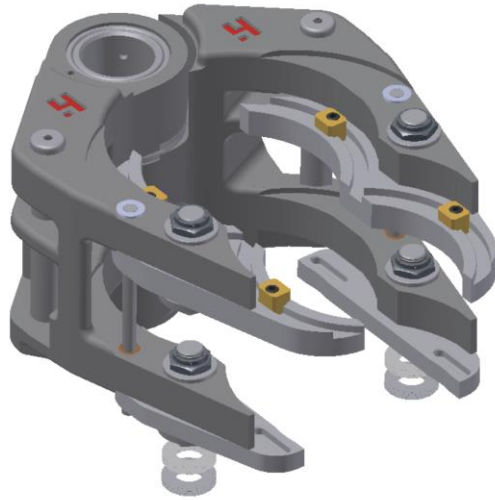
Holder No.	Assembly Ident. No.	Cooling		Dimensions			
		Axial	Radial	Ø ["]	Insert Ø [mm]	H ["]	H [mm]
215F205200	2101200070		x	5	129.9	2 5/8	66.7
	2101200071		x	4 5/8	117.2	2 5/8	66.7
	2101200072		x	4 5/8	117.2	2 5/8	66.7
215F205700	2101200080		x	5	129.9	3 5/8	92.1
	2101200086		x	5	129.9	3 5/8	92.1
	2101200097		x	5	129.9	3 5/8	92.1
215F205800	2101200060		x	4 5/8	117.2	5/8	15.875
	2101200061		x	4 5/8	117.2	2	50.8
	2101200062		x	5	129.9	5/8	15.875
	2101200063		x	5	129.9	2	50.8
	2101200069		x	4 5/8	117.2	5/8	15.875
	2101200089		x	4 5/8	117.2	5/8	15.875
215F205900	2101200084		x	5	129.9	4 5/8	117.475
	2101200085		x	5	129.9	4 5/8	117.475
2101429800	2101429400	x		5	124.8	2	51
	2101429700	x		5	124.8	3/4	20

BLANK MOULD HOLDER – 85MM CD TG



Holder No.	Assembly Ident. No.	Insert Ø [mm]	Dimensions	
				H [mm]
2220091000	2220090001	95		20
	2220090002	95		50

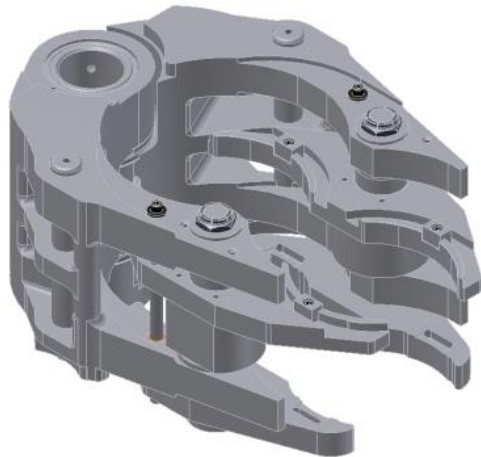
BLANK MOULD HOLDER – 5 1/2" CD DG



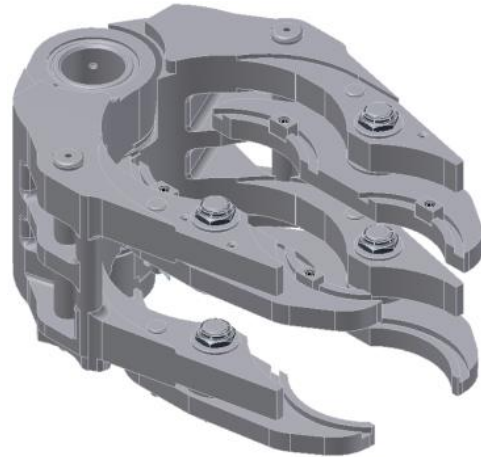
Holder No.	Assembly Ident. No	Dimensions			
		Ø ["]	Insert Ø [mm]	H ["]	H [mm]
	214F200008	6	152.4	4 5/8	117.5
	214F200010	5 3/8	136.7	2 3/4	69.85
	214F200061	5 3/8	136.7	3/8	9.5
	214F200062	5 3/8	136.7	1 1/8	28.55
214F200100	214F200012	5 3/8	136.7	2 3/4	69.85
	214F200013	5 3/8	136.7	4 5/8	117.5
	214F200014	5 3/8	136.7	4 5/8	117.5
	214F200015	5 3/8	136.7	2 3/4	69.85
	214F200016	6	152.4	2 3/4	69.85
	214F200017	6	152.4	4 5/8	117.5
	214F200018	6	152.4	4 5/8	117.5
	214F200019	6	152.4	2 3/4	69.85

BLANK MOULD HOLDER – 6 1/4" CD DG

AXIAL & RADIAL MOULD COOLING



Axial

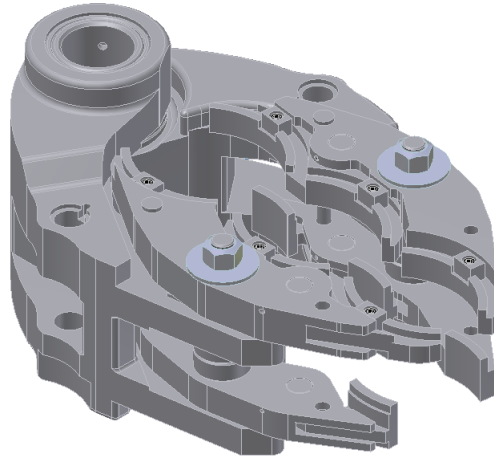


Radial

Holder No.	Assembly Ident. No.	Cooling		Dimensions			
		Axial	Radial	Ø ["]	Insert Ø [mm]	H ["]	H [mm]
213F204200	213F200010		x	4 5/8	117.45	2 5/8	66.7
	213F200013		x	5	130	3 5/8	92.1
	213F200020		x	5	130	5 25/64	136.9
	213F200022		x	5	130	2	50.8
	213F200023		x	5	130	2 5/8	66.7
	213F200024		x	4 5/8	117.2	3 5/8	92.1
	213F200025		x	4 5/8	117.4	2	50.8
	213F200030		x	5	130	4 5/8	117.5
	213F200044	x		5	125	2	51
	213F200045	x		5	125	3/4	20
	213F200076		x	5 1/8	130	2	50,8
	213f200077		x	5 1/8	130	2	50,8
213F206600	213F200073		x	6	152,4	2 1/8	54
	213F200074		x	6	152,4	5/8	15,9
213F206400	213F200070		x	6	152,4	3 5/8	92,1
	213F200071		x	6 7/8	174,625	2 5/8	66,7
	213F200072		x	6	152,4	2 5/8	66,7
	213F200075		x	4 5/8	117,2	1/8	3,2
	213F200092		x	5 1/8	130	5/8	15,88

BLANK MOULD HOLDER – 4 ¼” CD TG

AXIAL & RADIAL MOULD COOLING



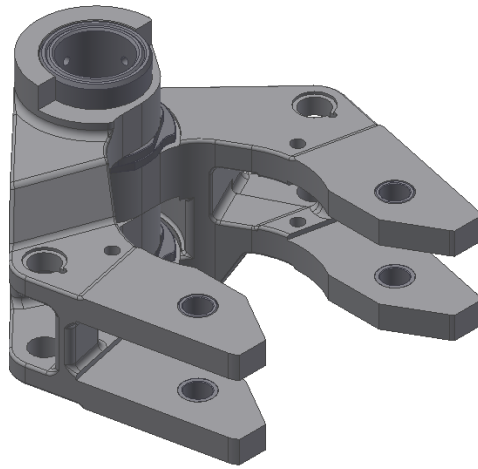
Holder No.	Assembly Ident. No.	Dimensions			
		Ø [“]	Insert Ø [mm]	H [“]	H [mm]
213F203900	213F202400	4 5/8	117.2	2 ¼	57.1
	213F202600	4 5/8	117.2	2 ¼	57.1
	213F206000	4 5/8	117.2	1 5/8	41.3
	213F206100	4 5/8	117.2	1/8	3.2
	213F209000	4 5/8	117,2	1/8	3,2
213F204000	213F204500	4 5/8	117,2		97,1
213F209100 ***	213F209500	85,52	85,52	1/8	3,2
	213F209600	98,2	98,2	1/8	3,2
2220081000	2220080001	4 5/8	117,2		97,1

*** For small Moulds

SECTION 5.

BLOW MOULD HOLDER

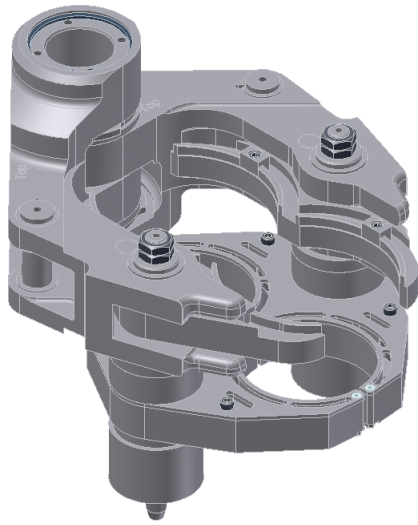
BLOW MOULD HOLDER – 4 1/4” CD DG



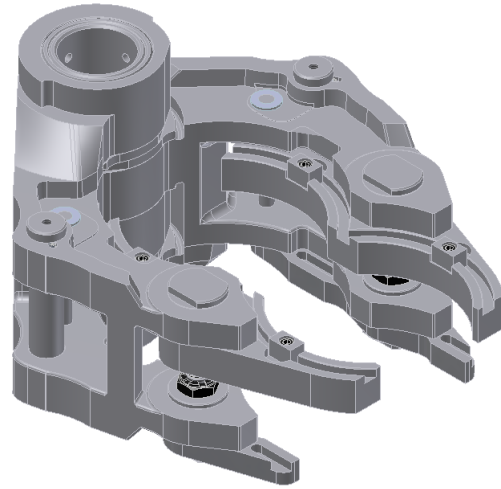
Holder No.	Assembly Ident. No.	Dimensions			
		Ø ["]	Insert Ø [mm]	H ["]	H [mm]
212F206000	212F200060				
	212F200061				

BLOW MOULD HOLDER – 5" CD DG

AXIAL & RADIAL MOULD COOLING



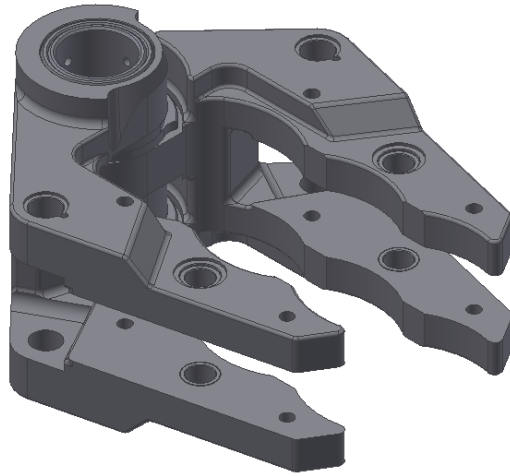
Axial



Radial

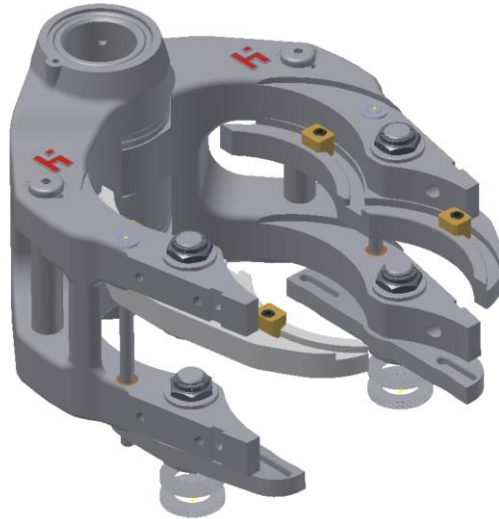
Holder No.	Assembly Ident. No.	Cooling		Dimensions			
		Axial	Radial	Ø ["]	Insert Ø [mm]	H ["]	H [mm]
2101412800	2101412000	x		5	129.9	3 5/32	80
	2101412500	x		5	129.9	2 13/64	56
	2101410900	x		5	134.9	3 5/32	80
	2101411900	x		5	134.9	2 13/64	56
	2101412300	x		5	134.9	6 3/64	153.75
	2101412400	x		5	134.9	4 51/64	122
215F206100	2101200012		x	5	129.9	5/8	15.9
	2101200013		x	5	129.9	2	50.8
	2101200014		x	5	129.9	2	50.8
215F206200	2101200015		x	5	129.9	2 5/8	66.7
215F206300	2101200016		x	5	129.9	2 5/8	66.7

BLOW MOULD HOLDER – 85MM CD TG



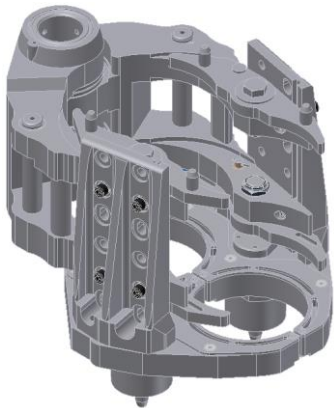
Holder No.	Assembly Ident. No.	Insert Ø [mm]	Dimensions	
			H [mm]	
2220091100	2220090003	95	0	
	2220090004	95	30	

BLOW MOULD HOLDER – 5 1/2” CD DG

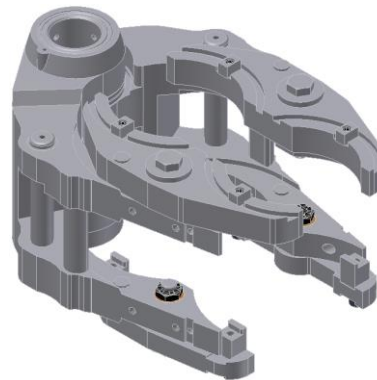


Holder No.	Assembly Ident. No	Dimensions			
		Ø ["]	Insert Ø [mm]	H ["]	H [mm]
	214F200009	5 3/8	136.7	3/8	9.5
	214F200011	6	152.4	2 1/4	57.15
	214F200063	6	152.4	3/8	9.5
	214F200065	5 3/8	136.7	3/8	9.5
	214F200066	5 3/8	136.7	3/8	9.5
	214F200067	6	152.4	2 1/4	57.15
	214F200050	6	152.4	3/8	9.5
	214F200051	6	152.4	2 1/4	57.15
	214F200052	6	152.4	2 1/4	57.15
	214F200053	6	152.4	3/8	9.5
214F200200	214F200054	5 3/8	136.7	3/8	9.5
	214F200055	5 3/8	136.7	2 1/4	57.15
	214F200056	5 3/8	136.7	2 1/4	57.15
	214F200057	5 3/8	136.7	3/8	9.5

BLOW MOULD HOLDER – 6 ¼” CD DG AXIAL & RADIAL MOULD COOLING



Axial

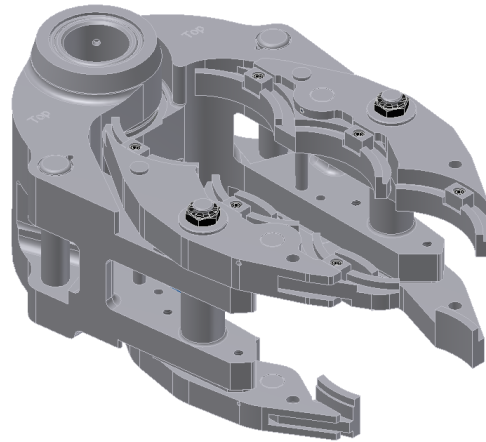


Radial

Holder No.	Assembly Ident. No.	Cooling		Dimensions			
		Axial	Radial	Ø [“]	Insert Ø [mm]	H [“]	H [mm]
213F204300	213F200050		x	5	130	2	50.8
	213F200052		x	5	130	5/8	15.85
	213F200051		x	5	130.2	2 5/8	66.7
	213F200054		x	6 ¼	159	2	50.8
	213F200058		x	6 ¼	159	2	50.8
	213F200060		x	6 ¼	159	1 7/32	30.8
	213F200063		x	6 ¼	159	1 7/32	30.8
	213F200065		x	5	130	2 5/8	66,7
2102413000	2102411200	x		6 ¼	159	6 53/64	173.4
	2102411300	x		5	135	6 3/64	153.75
	2102411500	x		5	135	4 51/64	122
2241400200	213F200086	x		5	130	2 19/64	58,23
	213F200087	x		5	130	1 3/64	26,48
	213F200088	x		6 ¼	159	1 7/32	30,8
	213F200089	x		6 ¼	159	1 7/32	30,8
213F206500	213F200066		x	6 7/8	174,6	2 5/8	66,7
	213F200084		x	5 1/8	130	2 3/8	60,33
213F206700	213F200067		x	6 7/8	174,6	1 1/8	28,6
	213F200068		x	6	152,4	1 1/8	28,6
	213F200069		x	6	152,4	5/8	15,9
	213F200083		x	5	130	5/8	15,9

BLOW MOULD HOLDER – 4 1/4" CD TG

VERTICAL & RADIAL MOULD COOLING



Holder No.	Assembly Ident. No.	Dimensions			
		Ø ["]	Insert Ø [mm]	H ["]	H [mm]
213F203400	213F203700	4 5/8	117.2	1 15/32	37.1
	213F203700	4 5/8	117.2	2	50.8
	213F203700	4 5/8	117.2	2 1/4	57.1
	213F208700	4 5/8	117.2	2 5/8	66.7
	213F208800	4 5/8	117.2	2 5/8	66.7
	213F204100	4 5/8	117.2	41/64	16.2
213F203500	213F202200	4 5/8	117.2	1 15/32	37.1
	213F202200	4 5/8	117.2	2	50.8
213F205700	213F207000	4 5/8	117.2	1 5/8	41.3
	213F207100	4 5/8	117.2	1/8	3.2
	213F208900	4 5/8	117,2	1 15/32	37,1
213F209200 *** (single deck)	213F209700	85,52	85,52	1/8	3,2
	213F209800	98,2	98,2	1/8	3,2
2220081100	2220080002	4 5/8	117.2	1 15/32	37.1

*** For small Moulds

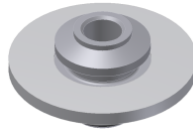
SECTION 6.

CARTRIDGES / PLUNGER POSITIONER

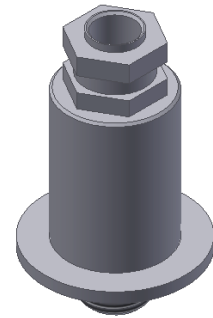
QUICK CHANGE CARTRIDGE – BB



Quick Change Cartridge



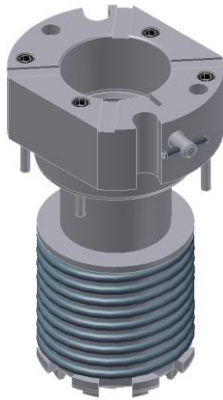
Mounting Kit



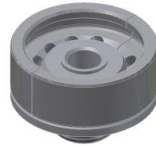
Mounting kit plunger guide included

Part No.	Description	Mounting Kit	Thread
2210430022 (Standard)	Type Heye 201.2 with Bayonet	2210160015 (Standard) 2210160014 (plunger guide included)	1" UNF outer
2210430023	Type Heye 201.2 with Bayonet	21AL100101	1" UNF outer
2210430024	Type Heye 201.2 with Bayonet	2210160131	1 1/8" UNF inner
2210540001	85mm TG with Bayonet		

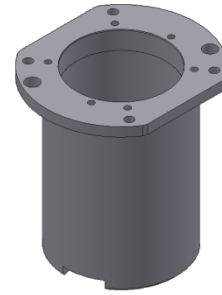
PLUNGER POSITIONER – NNPB / PB



Plunger Positioner



Mounting Kit



Distance Bushing 120 -> 90

Part No.	Description	Stroke / Height	NNPB	PB	Lubrication needed?	Mounting Kit
2210400041 (Standard)	70 mm Type Heye Long Stroke 151.1	7,5" 44,9mm	x		No	2210160002
21HY105100	70 mm Type Heye Long Stroke 251.1	7,5" 44,9mm		x	No	2210160002
2210400061	83 mm Type Heye Long Stroke 055.1	7,5" 44,9mm		x	No	2210160012
2210400071	90 mm Type Heye Long Stroke 053.1	7,5" 44,9mm		x	Yes	2210160009
21VE100400	70mm No.3	8,5" 63,3mm	x			21VE100410
21VE100300	38mm	8,5" 68,9mm	x			21VE100310
21VE100500	83mm No. 4	8,5" 60,2mm	X			21VE100510
2210410001	120mm without Spring for SG Plunger Cyl.	6 7/8" 36mm	x			2210160026
2210410002	120mm with Spring for SG Plunger Cyl.	6 7/8" 36mm	x			2210160026
2210410003	120mm without Spring for 90mm Plunger Cyl.	7,5" 54,9mm	x			2210160026
2210410004	120mm with Spring for 90mm Plunger Cyl.	7,5" 54,9mm	x			2210160026
2210100134	Distance bushing 120 -> 90	10mm	x	x		2210160028 (Screws)
2210550001	For 85mm TG		x			
21AW100500	No. 2 – 70mm					21DA100001
21AW100600	No. 3 – 83mm					
21AW100400	No. 1 – 53mm					
21AW100300	38mm		x			

SECTION 7.

FUNNEL HOLDER

FUNNEL HOLDER - PISTON ROD Ø 38.1 MM



Piston Rod



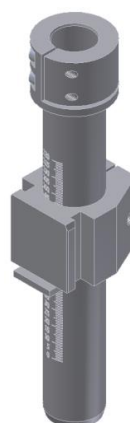
Hinge Type

Machine type	Type	Size	Description	Part No.
4 ¼" SG				
5" SG				
4 ¼" DG	Hinge Type		2 7/8" (73mm)	212F081000
5" DG	Piston Rod	1 (No. 54)	3 ¼" (82.5 mm)	215F080500
		2A (No. 52)	3 13/16" (96.8 mm)	215F080600
	Hinge Type	2 (No. 53)	3 ½" (88.9 mm)	215F080700
		2 (No. 53)	3 ½" (88.9mm)	215F086000
85mm TG				
5 ½" SG				
5 ½" DG	Piston Rod		3 ½" (88.9 mm)	214F081200
			3 ½" (88,9 mm)	214F085200
			4 7/16" (112,7 mm)	214F085300
	Hinge Type		3 ½" (88.9mm)	214F080800
			3 13/16" (96,8mm)	214F080600
			4 7/16" (112.7mm)	214F080900
6 ¼" SG				
6 ¼" DG	Hinge Type		3 ½" (88.9mm)	213F080800
			4 7/16" (112.7mm)	213F080700
4 ¼" TG	Hinge Type		3 ½" (88.9mm)	213F080900

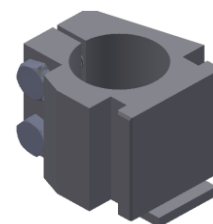
FUNNEL HOLDER – QUICK CHANGE



Funnel Holder QC



Mounting Kit with scale



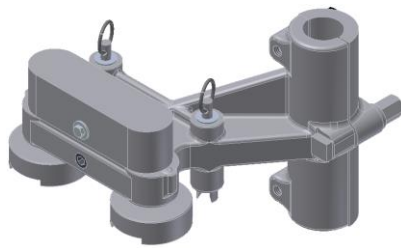
Mounting Kit

Machine type	Size	Description	Part No.	Mounting Kit
4 ¼" SG	No. 0, 1, 2	3 ½" (88.9 mm)	2208551000	2208559000 (Ø 38.1) with scale 2208101300 (Ø 38.1) 2208140100 (Ø 50)
	No. 2A, 3	4 7/16" (112.7 mm)	2208551100	
	No. 4	5 3/16" (131.7mm)	2208551200	
4 ¼" DG	No. 00	2 7/8" (73mm)	2208552000	
	No. 0, 1	3 ¼" (82.5mm)	2208552100	
	No. 2	3 ½" (88.9mm)	2208552200	
5" SG	No. 0, 1, 2	3 ½" (88.9 mm)	2208551300	
	No. 2A, 3	4 7/16" (112.7 mm)	2208551400	
	No. 4	5 3/16" (131.7mm)	2208551500	
5" DG	No. 0, 1	3 ¼" (82.5mm)	2208553000	
	No. 2	3 ½" (88.9 mm)	2208553100	
	No. 2A	3 13/16" (96.8mm)	2208553200	
	No. 3	4 7/16" (112.7 mm)	2208553300	
85mm TG	Size 00	57mm	2208557000	
	Size 0	71mm	2208557100	
5 ½" SG	No. 0, 1, 2	3 ½" (88.9 mm)	2208558000	
	No. 2A, 3	4 7/16" (112.7 mm)	2208558100	
	No. 4	5 3/16" (131.7mm)	2208558200	
5 ½" DG	No. 0, 1, 2	3 ½" (88.9 mm)	2208554000	
	No. 2A, 3	4 7/16" (112.7 mm)	2208554100	
6 ¼" SG	No. 0, 1, 2	3 ½" (88.9 mm)	2208558300	
	No. 2A, 3	4 7/16" (112.7 mm)	2208558400	
	No. 4	5 3/16" (131.7mm)	2208558500	
6 ¼" DG	No. 0, 1, 2	3 ½" (88.9 mm)	2208555000	
	No. 2A, 3	4 7/16" (112.7 mm)	2208555100	
4 ¼" TG	No. 1	3 ¼" (82.5 mm)	2208556000	
	No. 2	3 ½" (88.9 mm)	2208556100	
	No. 00	2 7/8" (73 mm)	2208556200	

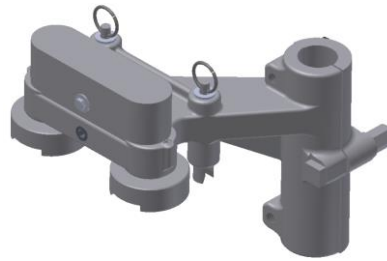
SECTION 8.

BAFFLE HOLDER

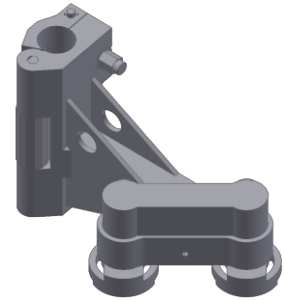
BAFFLE HOLDER - PISTON ROD



215F090100



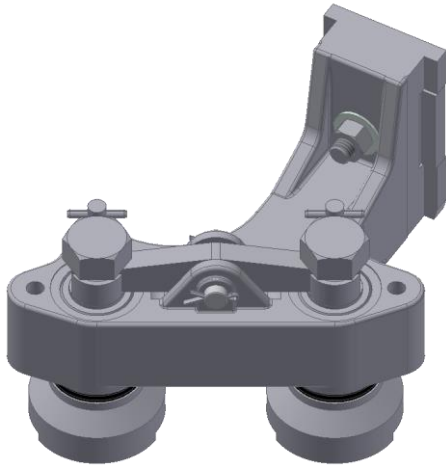
215F091100



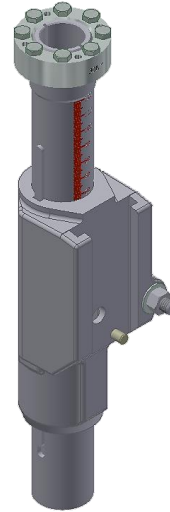
Hinge Type

Machine type	Limits (↓ mould – upperside baffle)	Piston Rod-Ø	Part No.
4 ¼" SG		1 ½" - 38,1mm	-
5" SG		1 ½" - 38,1mm	-
4 ¼" DG		1 ½" - 38,1mm	2209143100
5" DG	min. 136,5mm (5,375") – max. 254mm (10")	1 ½" - 38,1mm	215F091100
	min. 76,9mm (3") – max. 204,5mm (8")		215F090100
85mm TG		1 ½" - 38,1mm	2209143000
4 ¼" DG	Hinge Type - 235mm	1 ½" - 38,1mm	212F091000
5" DG	Hinge Type - 235mm	1 ½" - 38,1mm	215F090800
5 ½" DG	Hinge Type - 235mm	1 ¾" - 44,45mm	214F091200
6 ¼" DG	Hinge Type - 235mm	1 ¾" - 44,45mm	213F090800

BAFFLE HOLDER - QUICK CHANGE

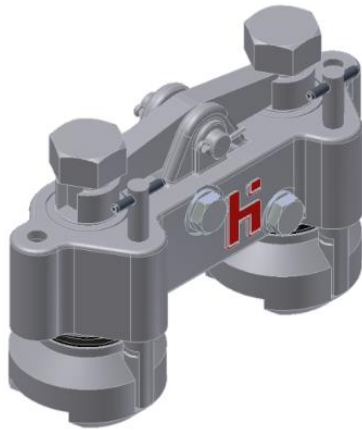


Baffle Holder QC

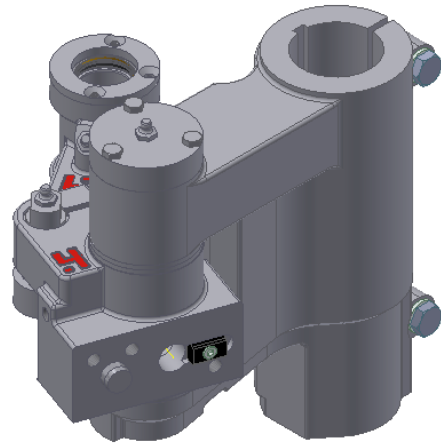


Mounting Kit

Machine type	Part No.	Mounting Kit
5" DG	215F095000	215F095100 for Ø 38,1
6 ¼" DG	213F090400	213F094100 for Ø 44,45

BAFFLE HOLDER FOR PANTOGRAPH ON 5"-MACHINE

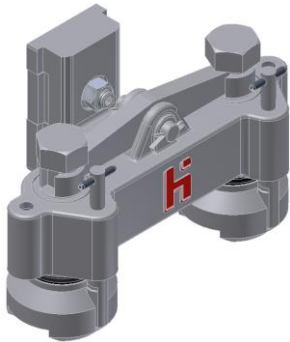
DG



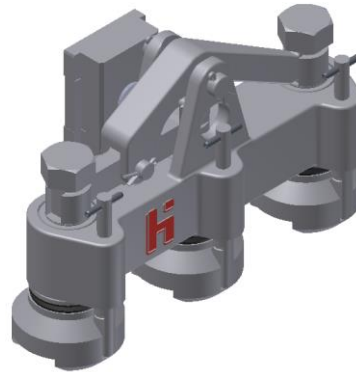
Pantograph Arm Assembly

Machine type	Part No.
5" DG	215F092200
Pantograph Arm Assembly	215F092300
Mounting Parts	215F092700
Guide Rod	215F092702

BAFFLE HOLDER FOR PANTOGRAPH ON 6 ¼"-MACHINE

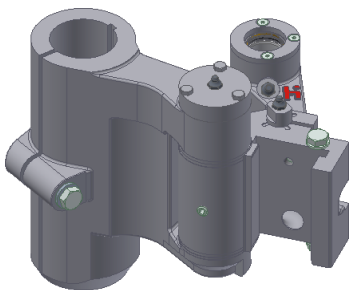


DG

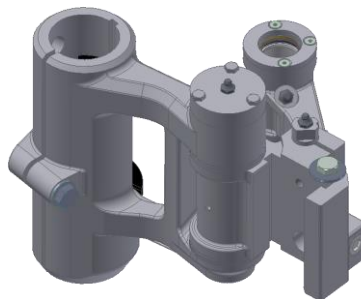


TG

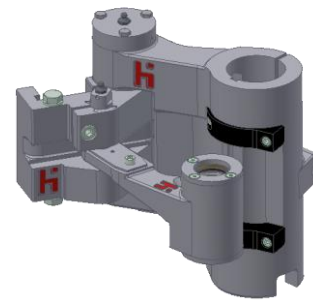
Machine type	Part No.
5 ½" SG	211F090300
6 ¼" SG	211F090200
5 ½" DG	214F091800
6 ¼" DG	213F093700
4 ¼" TG	213F093800
for small Moulds (lower Limits)	213F094300



Pantograph Arm Assembly
Standard



Pantograph Arm Assembly
Weight reduced



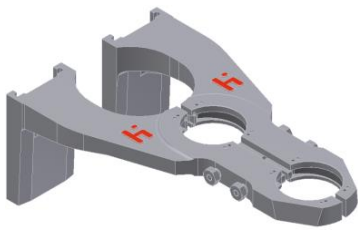
Pantograph Arm Assembly
for lower limits

Type	Part No.
Standard	213F093400
Weight reduced	213F094800
For lower Limits	21VN093400
Mounting Parts	2209141500
Guide Rod	2209141900

SECTION 9.

NECKRING HOLDER

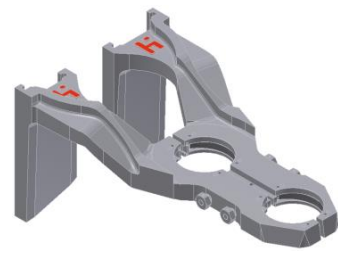
NECKRING HOLDER (WIDE=76,2)



Straight



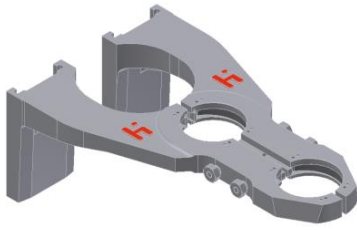
Offset



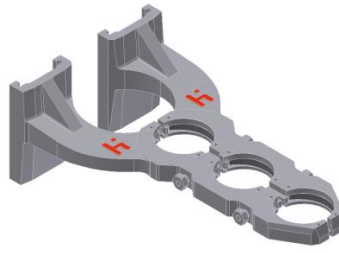
Special / Universal

Machine type	Description	Type	Part No.
4 1/4" SG	70 mm	Special	2211550200
	90 mm	Special	2211550300
	120 mm	Special	2211550400
	70 mm	Straight	2211550500
	90 mm	Straight	2211550600
	120 mm	Straight	2211550700
4 1/4" DG	70 mm	Special	2211552000
	83 mm	Special	2211552100
5" SG	70 mm	Straight	2211551300
	90 mm	Straight	2211551400
	120 mm	Straight	2211551500
	70 mm	Special	2211551000
	90 mm	Special	2211551100
	120 mm	Special	2211551200
5" DG	70 mm	Universal	2211553000
	83 mm	Universal	2211553100
	90 mm	Universal	2211553200
	70 mm	Straight	2211553400
85mm TG	30 mm	Special	2211559000
	55 mm	Special	2211559100

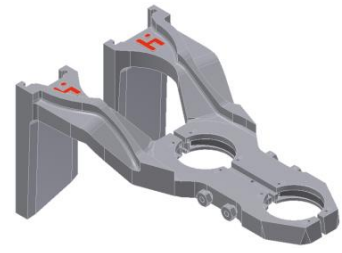
NECKRING HOLDER (WIDE=76,2)



Straight



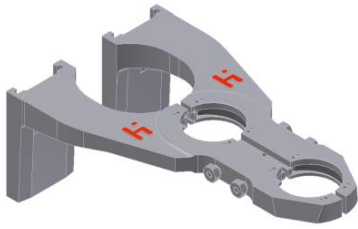
Offset



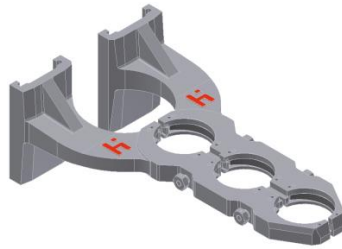
Special / Universal

Machine type	Description	Type	Part No.
5 1/2" SG	70 mm	Straight	2211558300
	90 mm	Straight	2211558400
	120 mm	Straight	2211558500
	70 mm	Special	2211558000
	90 mm	Special	2211558100
	120 mm	Special	2211558200
5 1/2" DG	70 mm	Special	2211554000
	83 mm	Special	2211554100
	90 mm	Special	2211554200
	70 mm	Straight	2211554300
6 1/4" SG	70 mm	Straight	2211557300
	90 mm	Straight	2211557400
	120 mm	Straight	2211557500
	70 mm	Special	2211557000
	90 mm	Special	2211557100
	120 mm	Special	2211557200
6 1/4" DG	70 mm	Special	2211555000
	83 mm	Special	2211555100
	90 mm	Special	2211555200
	70 mm	Straight	2211555300
	105mm	Special	2211555700
4 1/4" TG	70 mm	Offset	2211556000

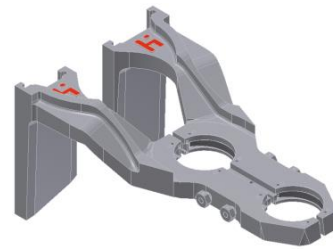
NECKRING HOLDER (SMALL=58)



Straight



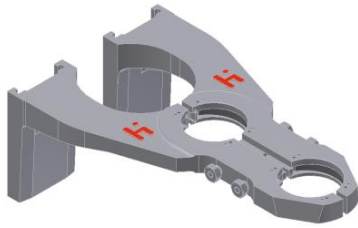
Offset



Special / Universal

Machine type	Description	Type	Part No.
4 1/4" SG	70 mm	Straight	2211550100
	90 mm	Straight	2211550800
	120 mm	Straight	2211550900
	70 mm	Special	2211560100
	90 mm	Special	2211560200
	120 mm	Special	2211560300
4 1/4" DG	70 mm	Special	2211552200
	83 mm	Special	2211552300
5" SG	70 mm	Straight	2211551600
	90 mm	Straight	2211551700
	120 mm	Straight	2211551800
	70 mm	Special	2211561000
	90 mm	Special	2211561100
	120 mm	Special	2211561200
5" DG	70 mm	Universal	2211553600
	83 mm	Universal	2211553700
	90 mm	Universal	2211553800
	70 mm	Straight	2211553500
85mmTG	30 mm	Special	2211559200
	55 mm	Special	2211559300

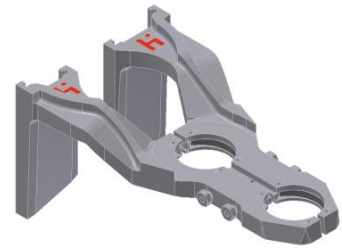
NECKRING HOLDER (SMALL=58)



Straight



Offset



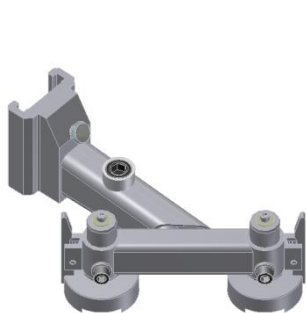
Special / Universal

Machine type	Description	Type	Part No.
5 1/2" SG	70 mm	Straight	2211558600
	90 mm	Straight	2211558700
	120 mm	Straight	2211558800
	70 mm	Special	-
	90 mm	Special	-
	120 mm	Special	-
5 1/2" DG	70 mm	Special	2211554400
	83 mm	Special	2211554500
	90 mm	Special	2211554600
	70 mm	Straight	2211554900
6 1/4" SG	70 mm	Straight	2211557600
	90 mm	Straight	2211557700
	120 mm	Straight	2211557800
	70 mm	Special	-
	90 mm	Special	-
	120 mm	Special	-
6 1/4" DG	70 mm	Special	2211555400
	83 mm	Special	2211555500
	90 mm	Special	2211555600
	105mm	Special	2211555800
	70 mm	Straight	2211555900
4 1/4" TG	70 mm	Offset	2211556200
	70mm	Special	2211556300

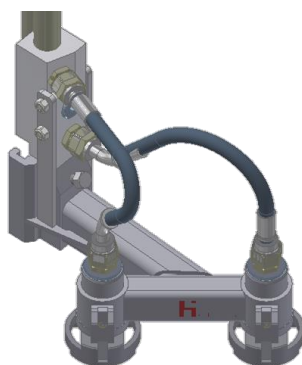
SECTION 10.

BLOW HEAD HOLDER

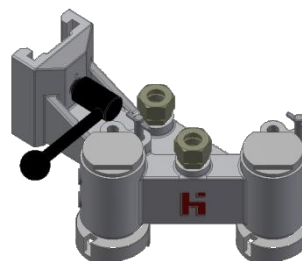
BLOW HEAD HOLDER - QUICK CHANGE



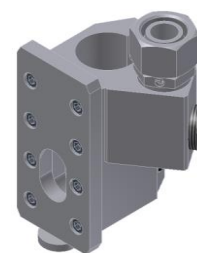
Blow Head Holder
without Finish Cooling



Blow Head Holder
with air distributor ****



Blow Head Holder
"Alu"-Type



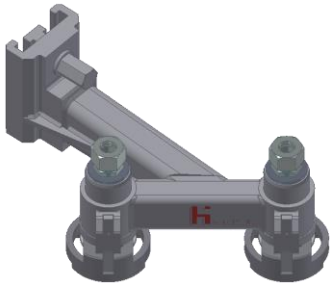
Mounting Kit

Machine type	Finish Cooling	Ø Piston Rod	Blow Head Holder Part No.	Mounting Kit Part No.
4 ¼" SG	Yes	50mm	2212558700	2212141500
4 ¼" DG	Yes	50mm	2212558100****	2212141500
5" SG	Yes	50mm	2212558300	2212141500
5" DG	Yes	50mm	2212558200****	2212141500
	No	50mm	215F126000-Alu	2212141700
85mm TG	Yes	50mm	2212100002	2212141500
5 ½" SG	Yes	50mm	2212558800****	2212141500
5 ½" SG	Yes	50mm	2212558900	2212141400
5 ½" DG	Yes	50mm	2212558400****	2212141400
	No	50mm	2212100007	2212141400
6 ¼" SG	Yes	50mm	2212559000	2212141400
6 ¼" DG	Yes	50mm	213F128700-Alu	2212141600
	No	50mm	2212100008	2212141400
	Yes	50mm	2212559100****	2212141400
4 ¼" TG	Yes	50mm	213F128100-Alu	2212141600
	No	50mm	2212100100	2212141400
	Yes	50mm	2212559200****	2212141400

Mounting Kit Heye Type 5" for 38,1mm Piston Rod: 2212101600

Mounting Kit Heye Type 6 ¼" for 44,45mm Piston Rod: 2212101900

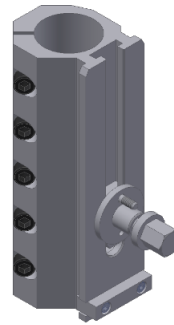
BLOW HEAD HOLDER - QUICK CHANGE (HEIGHT ADJUSTMENT ONLY)



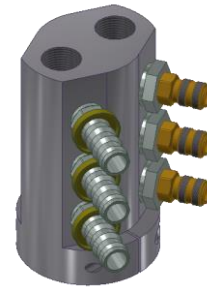
Blow Head Holder



Mounting Kit



Mounting Kit for
Emhart Blow Head
Holder 5":
215F126100



Air distributor

Machine type	Finish Cooling	Ø Piston Rod	Blow Head Holder Part No.	Mounting Kit Part No.
4 ¼" SG	In Blowhead	50mm	21AN129200	21AN128800
4 ¼" DG	In Blowhead	50mm	21AN129000	21AN128800
5" SG	In Blowhead	50mm	21AN129400	21AN128800
5" DG	In Blowhead	50mm	21AN128700	21AN128800
85mm TG	In Blowhead	50mm	21AN129100	21AN128800
5 ½" SG	In Blowhead	50mm	-	21AN128300
5 ½" DG	In Blowhead	50mm	21AN128400	21AN128300
6 ¼" SG	In Blowhead	50mm	21AN129300	21AN128300
6 ¼" DG	In Blowhead	50mm	21AN128500	21AN128300
4 ¼" TG	In Blowhead	50mm	21AN128600	21AN128300

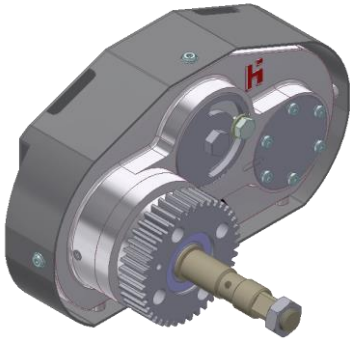
Machine type	Air distributor	Ø Piston Rod	Hose size Final blow / Neckring cooling	Hose connection Kit Part No.
DG	21AN128900	50mm	DN16 / DN16	** Quantity: 2pc
TG	21AN128100	50mm	DN16 / DN16	** Quantity: 3pc
	21AN128200		DN16 / DN6	21MA128100

**Flexible Hose for Neckring Cooling: 9120018185 / Final Blow: 9120018184.

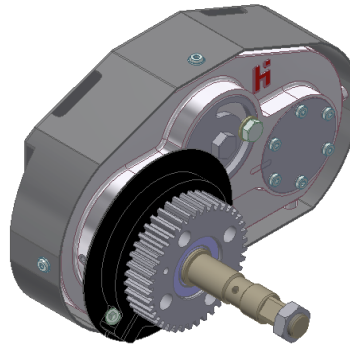
SECTION 11.

TAKE OUT ARM

TAKEOUT - ARM FOR PNEUMATIC & SERVO MECHANISM



Take out arm pneumatic



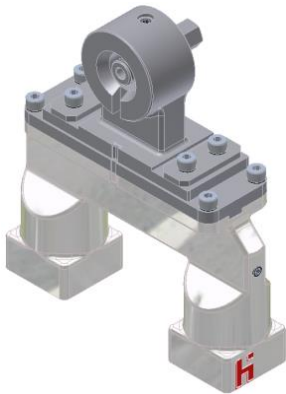
Take out arm servo

Machine type	Description	Pneumatic Part No.	Servo Part No.
4 1/4" SG & DG	Take out tong arm	2213200007	2213200008
5" SG & DG 85mm TG	Take out tong arm	2213200003	2213200005
5 1/2" SG & DG 6 1/4" SG & DG 4 1/4" TG	Take out tong arm	2213200004	2213200006

SECTION 12.

TAKE OUT HEAD

TAKEOUT - TONG HEAD X-Y ADJUSTABLE INSERT TYPE "ANTIWINK"



Tong head DG



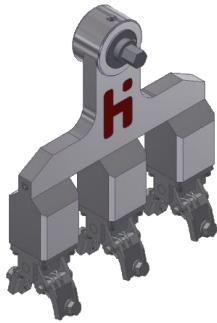
Insert



Additional Cooling DG

Machine type	Description	Material	Part No.
4 ¼" SG & 5" SG	Takeout Tong Head, with Insert	Aluminum Cast	2213250011
	Takeout Tong Head, w/o Insert		2213252900
4 ¼" DG	Takeout Tong Head, with Insert	Aluminum Cast	2213250008
	Takeout Tong Head, w/o Insert		2213252500
5" DG	Takeout Tong Head, with Insert	Aluminum Cast	2213250005
	Takeout Tong Head, w/o Insert		2213252100
85mm TG	Takeout Tong Head, with Insert	Aluminum Cast	2213250009
	Takeout Tong Head, w/o Insert		2213252700
5 ½" DG	Takeout Tong Head, with Insert	Aluminum Cast	2213250007
	Takeout Tong Head, w/o Insert		2213252400
5 ½" SG & 6 ¼" SG	Takeout Tong Head, with Insert	Aluminum Cast	2213250010
	Takeout Tong Head, w/o Insert		2213252800
6 ¼" DG	Takeout Tong Head, with Insert	Aluminum Cast	2213250006
	Takeout Tong Head, w/o Insert		2213252200
4 ¼" TG	Takeout Tong Head, with Insert	Aluminum Cast	2213250004
	Takeout Tong Head, w/o Insert		2213252300
95mm QG	Takeout Tong Head, with Insert	Aluminum Cast	-
	Takeout Tong Head, w/o Insert		2213252600
All Sizes	Takeout Insert, Type Antiwink	-	2101136000
5 1/2" DG & 6 ¼" DG	Additional Cooling Takeout Tong Head	-	2213253000
4 ¼" TG	Additional Cooling Takeout Tong Head	-	2213253100
4 ¼" DG & 5" DG	Additional Cooling Takeout Tong Head	-	2213253200

TAKEOUT - TONG HEAD NON-ADJUSTABLE INSERT TYPE "ANTIWINK"



Tong head TG



Insert



Additional Cooling DG

Machine type	Description	Material	Part No.
4 ¼" SG & 5" SG	Takeout Tong Head, with Insert	Aluminum Cast	2213250011
	Takeout Tong Head, w/o Insert		2213252900
4 ¼" DG	Takeout Tong Head, with Insert	Aluminum Cast	2213250031
	Takeout Tong Head, w/o Insert		2213255100
5" DG	Takeout Tong Head, with Insert	Aluminum Cast	2213250032
	Takeout Tong Head, w/o Insert		2213255200
	Takeout Tong Head, with Insert	Full Aluminum	2213250015
	Takeout Tong Head, w/o Insert		2213254100
85mm TG	Takeout Tong Head, with Insert	Aluminum Cast	2213250033
	Takeout Tong Head, w/o Insert		2213255300
5 ½" DG	Takeout Tong Head, with Insert	Aluminum Cast	2213250034
	Takeout Tong Head, w/o Insert		2213255400
5 ½" SG & 6 ¼" SG	Takeout Tong Head, with Insert	Aluminum Cast	2213250035
	Takeout Tong Head, w/o Insert		2213255500
6 ¼" DG	Takeout Tong Head, with Insert	Aluminum Cast	2213250036
	Takeout Tong Head, w/o Insert		2213255600
4 ¼" TG	Takeout Tong Head, with Insert	Aluminum Cast	2213250037
	Takeout Tong Head, w/o Insert		2213255700
	Takeout Tong Head, with Insert	Full Aluminum	2213250014
	Takeout Tong Head, w/o Insert		2213254000
95mm QG	Takeout Tong Head, with Insert	Aluminum Cast	2213250038
	Takeout Tong Head, w/o Insert		2213255800
All Sizes	Takeout Insert, Type Antiwink	-	2101136000
5 1/2" DG & 6 ¼" DG	Additional Cooling Takeout Tong Head	-	2213253000
4 ¼" TG	Additional Cooling Takeout Tong Head	-	2213253100
4 ¼" DG & 5" DG	Additional Cooling Takeout Tong Head	-	2213253200

SECTION 13.

PUSHER FINGER

PUSHER FINGER FOR TYPE 2158, 2157 & 2155



DuraTemp



CFC (Cerberite)

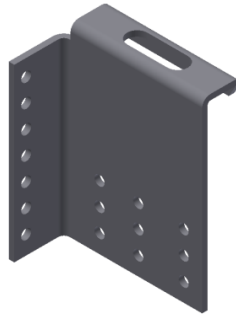


Stainless steel (1.4301)

Coat	Article diameter	Finger length	Finger height	Type 2157 & 2158	Type 2155	Part No.
DuraTemp	45 - 55 mm	58.5 mm	127mm	x	x	2157031000
		58.5 mm – short	56mm	x	-	2157031300
	55 - 65 mm	66 mm	127mm	x	x	2157031100
		66 mm – short	56mm	x	-	2157031400
	65 - 80 mm	78.2 mm	127mm	x	x	2157031200
		78.2 mm – short	56mm	x	-	2157031500
	80 – 95 mm	78.2 mm	127mm	x	x	2157031800
		78.2 mm – short	56mm	x	-	2157031900
90 – 100 mm	78.2 mm	127mm	x	-	2157031600	
	78.2 mm – short	56mm	x	-	2157031700	
Over 100 mm	60.5 mm		x	x	2157032000	
115 – 145 mm	87 mm		x	x	2157032300	
CF260Q (Cerberite)	50 – 65 mm	70 mm		x	x	2155081100
	60 – 70 mm	75 mm		x	x	2155081200
	65 – 80 mm	80 mm		x	x	2155081300
	70 – 90 mm	85 mm		x	x	2155081400
Stainless steel (1.4301)	50 – 65mm	70 mm	127mm	x	x	2155080111
		70 mm – short	56mm	x	-	2155080131
	60 – 70 mm	75 mm	127mm	x	x	2155080112
		75mm – short	56mm	x	-	2155080132
	65 – 80 mm	80 mm	127mm	x	x	2155080113
		80 mm – short	56mm	x	-	2155080133
	70 – 90 mm	85 mm		x	x	2155080114
		85 mm – short		x	-	2155080134

PUSHER FINGER FOR TYPE 2154

SHEET FINGER – STAINLESS STEEL



Sheet finger – stainless steel

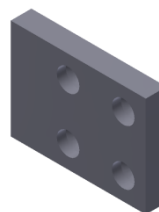
Characteristic	Finger length	Part No.
13.5 mm RH	75 mm	2150C80521
13.5 mm LH		2150C80522
18.5 mm RH	75 mm	2150C80523
18.5 mm LH		2150C80524
23.5 mm RH	75 mm	2150C80525
23.5 mm LH		2150C80526
28.5 mm RH	75 mm	2150C80527
28.5 mm LH		2150C80528

PUSHER FINGER FOR TYPE 2154

DURA TEMP FINGER



Push finger curved



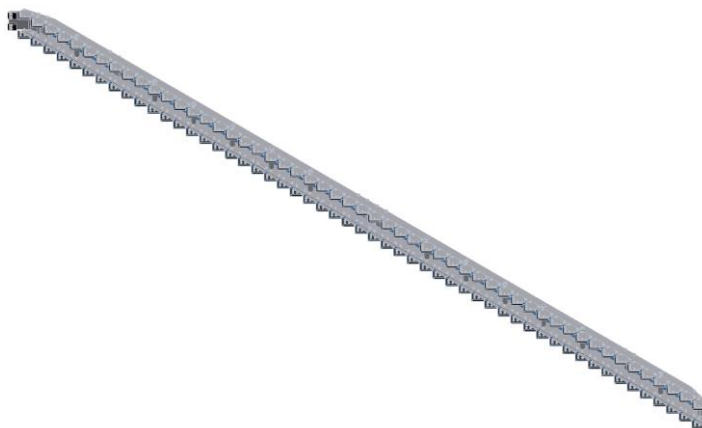
Pusher finger straight

Characteristic	Finger length	Part No.
Push finger curved	78.2 mm	9150130013
	58.5 mm	9150130014
	66 mm	9150130015
Push finger straight	60 mm	2150080583
	77 mm	2150080584
	65 mm	2150080586
	87 mm - MM375	9150130011
	60.5 mm - MM275	9150130012
	46.5 mm - MM218	9150130016
Sheet for Push finger	-	2150080502
Pusher finger straight (attached finger)	78 mm	2150080565
	60mm	2150080583
Distance plate attached finger	5 mm (40 x 40)	2150A80578
	10mm (40 x 40)	2150A80577
Mounting parts double-occupied	14.2 mm (1 distance plate)	2150A80700
	9.2 mm (no distance plate)	2150A80800
	19.2 mm (2 distance plates)	2150A80900
	24.2 mm (2 distance plates)	2150A80200
	29.2 mm (2 distance plates)	2150B80400
Mounting parts single-occupied	14.2 mm (1 distance plate)	2150B80700
	9.2 mm (no distance plate)	2150B80800
	19.2 mm (2 distance plates)	2150B80900
	24.2 mm (2 distance plates)	2150B80500
	29.2 mm (2 distance plates)	2150B80600

SECTION 14.

PUSH BAR

PUSH BAR FOR TYPE 4206, 4205, 4201



Push bars are manufactured according to the customers 'needs.
A distinction is made between metal sheet and push bars. The metal sheet plates on the push bar are either equipped with VA or CFC (cerberite) guiding's. The push bar heights: 40, 50, 60, 70, 80, 90, 100, 110, 120, 140, 160 are fixed dimensions.

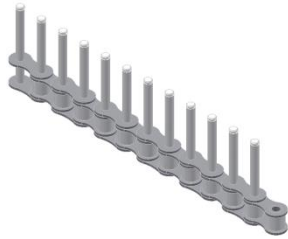
Variable dimensions are:

CD
Row number (R)
Angle (°) (Angle of Sheet)
Symmetrically or in 2 parts
Metal sheet plates

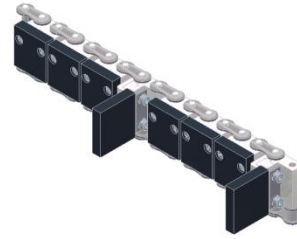
SECTION 15.

CHAIN FOR WARE TRANSFER

CHAIN FOR TYPE 4220



Roller chain

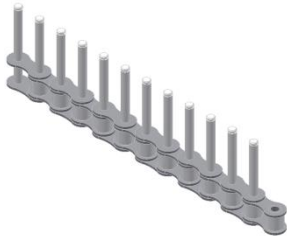


Main chain

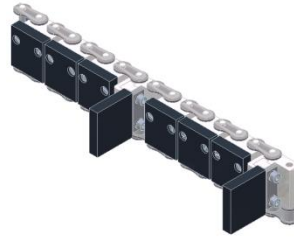
Finger chain t=3/4"	No. of elemen ts	Finger distance n x t=mm	Article limit s mm	Finger length Dura Temp mm	Part No. for complete chain with QC Finger	Part No. chain w/o Finger	Part No. for Finger	Roller chain
Standard	180	$4 \times \frac{3}{4}'' = 76.20$	$36 \leq 60$	40	4220110037	4220029900	4220020222	4220027200
		$5 \times \frac{3}{4}'' = 95.25$	≤ 76	45	4220110040	4220029800	4220020215	4220027200
		$6 \times \frac{3}{4}'' = 114.3$	≤ 92	54	4220110041	4220029700	4220020201	4220027200
Option	182	$7 \times \frac{3}{4}'' = 133.35$	≤ 107	60	4220110046	4220029600	4220020238	4220027300
	176	$8 \times \frac{3}{4}'' = 152.40$	≤ 122	66	4220110043	4220029500	4220020202	4220027100

Finger chain t=5/8"	No. of elemen ts	Finger distance n x t=mm	Article limit s mm	Finger length Dura Temp mm	Part No. for complete chain with QC Finger	Part No. chain w/o Finger	Part No. for Finger	Roller chain
Option	216	$3 \times \frac{5}{8}'' = 47.625$	≤ 34	30	4220110067	4220034100	4220020311	4220034200

CHAIN FOR TYPE 4222



Roller chain



Main chain

Finger chain t=3/4"	No. of elements	Finger distance n x t=mm	Article limit s mm	Finger length Dura Temp mm	Part No. for complete chain with QC Finger	Part No. chain w/o Finger	Part No. for Finger	Roller chain
Standard	150	5 x 3/4" = 95.25	≤ 77	45	4222110019	4222024100	4220020215	4222021400
		6 x 3/4" = 114.3	≤ 90	54	4222110020	4222024200	4220020201	4222021400
Option	152	4 x 3/4" = 76.2	≤ 60	40	4222110021	4222024000	4220020222	4222021500
		8 x 3/4" = 152.4	≤ 120	66	4222110025	4222024400	4220020202	4222021500
	154	7 x 3/4" = 133.35	≤ 105	60	4222110022	4222024300	4220020238	4222021600

Finger chain t=5/8"	No. of elements	Finger distance n x t=mm	Article limit s mm	Finger length Dura Temp mm	Part No. for complete chain with QC Finger	Part No. chain w/o Finger	Part No. for Finger	
Option	180	3 x 5/8" = 47.625	≤ 34	30	4222110060	4222034600	4220020311	4222023500
		5 x 5/8" = 79.375	≤ 61	45	4222110062	4222034500	4220020215	4222023500