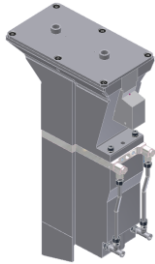


SECTION 3.

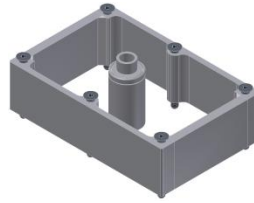
BLOW MOULD COOLING

BLOW MOULD COOLING – VAS – 5” MACHINE

VERTICAL AIR STREAM (VAS) WITH V-INSERT CPL. WITH BOTTOM PLATE



Vertical Air Stream



Installation kit 70mm



Conversion kit

CD	Description	Part No.
4 ¼” SG	VAS 4 ¼” SG - V-insert (incl. Butterfly valve)	2214110013
	Conversion kit to 4 ¼” SG	2214110015
	Installation kit SG 70 mm	2214122800
4 ¼” DG	VAS 4 ¼” DG - V-insert (incl. Butterfly valve)	2214110040
	VAS 4 ¼” DG - V-insert – direct flow (incl. Butterfly valve)	2214110046
	VAS 4 ¼” DG - V-insert – direct flow (without Butterfly valve)	2214110052
	Conversion Kit to 4 ¼” DG	2214110029
5” SG	Installation kit SG 70 mm	2214122800
	Conversion kit to 5” DG	2214110014
	Conversion kit to 5” SG	2214110025
5” DG	VAS 5” DG - V-insert (incl. Butterfly valve)	2214110041
	VAS 5” DG - V-insert - direct flow (incl. Butterfly valve)	2214110047
	VAS 5” DG - V-insert - direct flow (w./o. Butterfly valve)	2214110053
	Installation kit DG 70 mm	2214122600
	VAS 5” DG V-insert direct flow w./o. Butterfly valve divided upper part	2214110058
85mm TG	VAS V-insert (incl. Butterfly valve)	2214110045
	VAS V-insert – direct flow (incl. Butterfly valve)	2214110051
	VAS V-insert – direct flow (without Butterfly valve)	2214110057
	Installation kit TG 70 mm	2214123300
	Conversion kit to 85mm TG	2214110028

Height Adjustment and Spacer on request

BLOW MOULD COOLING – VAS – 6 1/4” MACHINE

VERTICAL AIR STREAM (VAS) WITH V-INSERT CPL. WITH BOTTOM PLATE



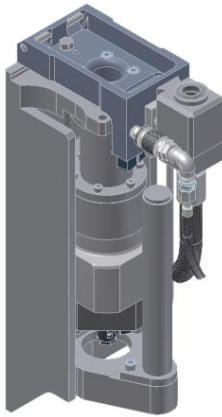
Vertical Air Stream Installation kit 70mm Conversion kit Conversion kit Bottom plate for VAS SG Conversion kit large moulds Distance frame small 70mm

CD	Description	Part No.
5 1/2" SG	Conversion kit to 5 1/2" SG	2214110026
5 1/2" DG	VAS 5 1/2" DG - V-insert (incl. Butterfly-valve)	2214110042
	VAS 5 1/2" DG - V-insert – direct flow (incl. Butterfly valve)	2214110048
	VAS 5 1/2" DG - V-insert – direct flow (without Butterfly valve)	2214110054
	Installation kit 70 mm DG	2214122700
	Conversion kit Bottom plate for VAS	2214112300
6 1/4" SG	Installation kit 70 mm SG	2214122900
	Conversion kit to 6 1/4" SG	2214110027
	Conversion kit 6 1/4" SG for 8 1/2" (large moulds)	2214124000
6 1/4" DG	VAS 6 1/4" DG - V-insert (incl. Butterfly valve)	2214110043
	VAS 6 1/4" DG - V-insert – direct flow (incl. Butterfly valve)	2214110049
	VAS 6 1/4" DG - V-insert – direct flow (without Butterfly valve)	2214110055
	Installation kit 70 mm DG	2214122700
	Conversion kit Bottom plate for VAS	2214112000
	Conversion kit to 6 1/4" DG	2214110011
4 1/4" TG	Conversion kit to 4 1/4" TG	2214110010
	VAS 4 1/4" TG - V-insert (incl. Butterfly valve)	2214110044
	VAS 4 1/4" TG - V-insert – direct flow (incl. Butterfly valve)	2214110050
	VAS 4 1/4" TG - V-insert – direct flow (without Butterfly valve)	2214110056
	Conversion kit Bottom plate for VAS – V-Form	2214111800
	Conversion kit Bottom plate for VAS – straight-Form	2214112100
	Installation kit 70 mm TG	2214122200
VAS distance frame small 70mm for small jars	2214123200	

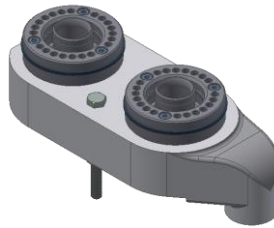
Height Adjustment and Spacer on request

BLOW MOULD COOLING – BOTTOM MECHANISM

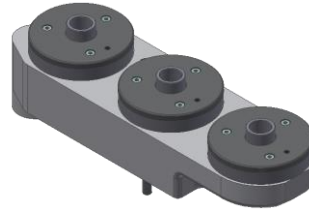
AXIAL MOULD COOLING (AC) BLOW MOULD BOTTOM MECHANISM WITH BOTTOM ADAPTER



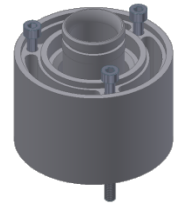
Blow mould bottom
mechanism



Blow mould bottom
adapter



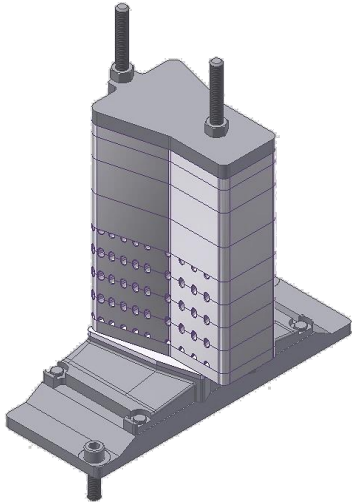
Conversion kit for VAS



Distance kit

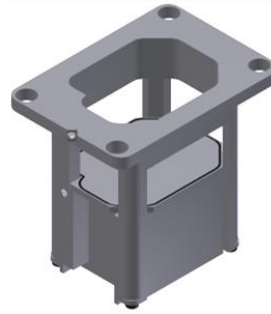
CD	Description	Part No.
All	blow mould bottom mechanism for Speedline	2101400800
	blow mould bottom mechanism for non-Speedline	2101400200
4 ¼" SG	Blow mould bottom adapter axial	-
4 ¼" DG	Blow mould bottom adapter axial	2101402400
5" SG	Blow mould bottom adapter axial	-
5" DG	Blow mould bottom adapter axial	2101400600
85mm TG	Blow mould bottom adapter axial	2101402500
5 ½" SG	Blow mould bottom adapter axial	-
5 ½" DG	Blow mould bottom adapter axial	2103401400
6 ¼" SG	Blow mould bottom adapter axial	-
6 ¼" DG	Blow mould bottom adapter axial	2102402000
4 ¼" TG	Blow mould bottom adapter axial	2104401000
	Conversion kit for VAS – without bottom cooling (vacuum only)	2104401100
	Distance kit 40mm for bottom plate	2104401011

BLOW MOULD COOLING – STACK COOLING – 5” MACHINE
STACK COOLING RADIAL WITH SEPARATE INTERMITTENT VALVE



Stack Cooling

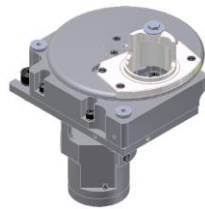
blank & blow-side stack pcs



Intermit. Valve

CD	Description	Part No. w/o valve	Part No. with valve
4 ¼” DG & 5” DG & 85mm TG	Stack Cooling unit Middle *	2221030100	2221030400
	Stack Cooling unit RH *	2221030200	2221030500
	Stack Cooling unit LH *	2221030300	2221030600
All	Intermit. Valve RH *	2101216100	
	Intermit. Valve LH *	2101216000	

BLOW MOULD COOLING – 360DEG - 5” MACHINE AXIAL MOULD COOLING (AC) EQUIPPED WITH BALL BEARINGS



Air supply
(ball bearing)

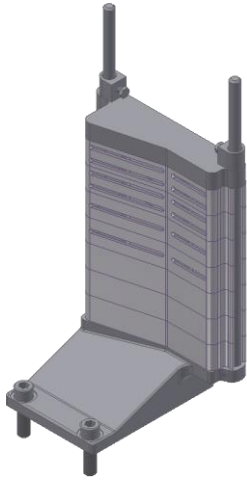


Air supply channel

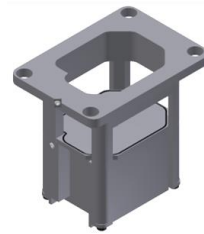
CD	Description	Part No.
5" DG & 85mm TG	Air supply RH (cpl. with intermit. Valve)	2101418700
	Air supply LH (cpl. with intermit. Valve)	2101418800
5" DG	Air supply channel	2101416600
	Air supply channel 1"	2101416900
	Air supply channel 1 1/4"	2101416700
85mm TG	Air supply channel	In construction
	Air supply channel 1"	In construction
	Air supply channel 1 1/4"	In construction

Cooling pieces: see page "blow mould holder"

BLOW MOULD COOLING – 5” CD DG FOR ASSORTMENT STACK COOLING RADIAL WITH SEPARATE INTERMITTENT VALVE



Stack Cooling
for sortiment

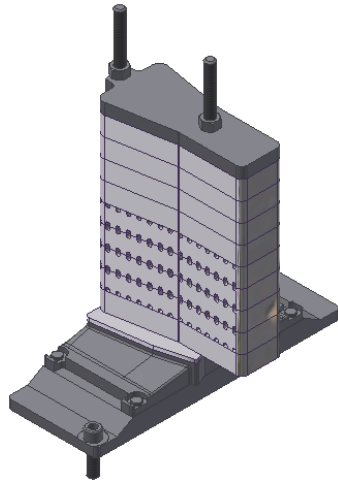


Intermit. Valve

Description	Part No.
Intermit. Valve RH	2101216100
Intermit. Valve LH	2101216000
Stack cooling for 1 section (LH & RH) for assortment production (without valve)	215F214200

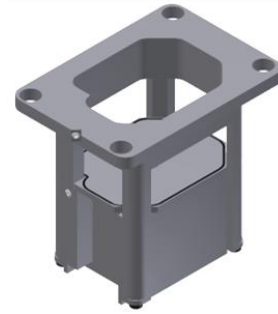
BLOW MOULD COOLING – STACK COOLING – 85MM TG

STACK COOLING RADIAL WITH SEPARATE INTERMITTENT VALVE



Stack Cooling

blank & blow-side stack pcs

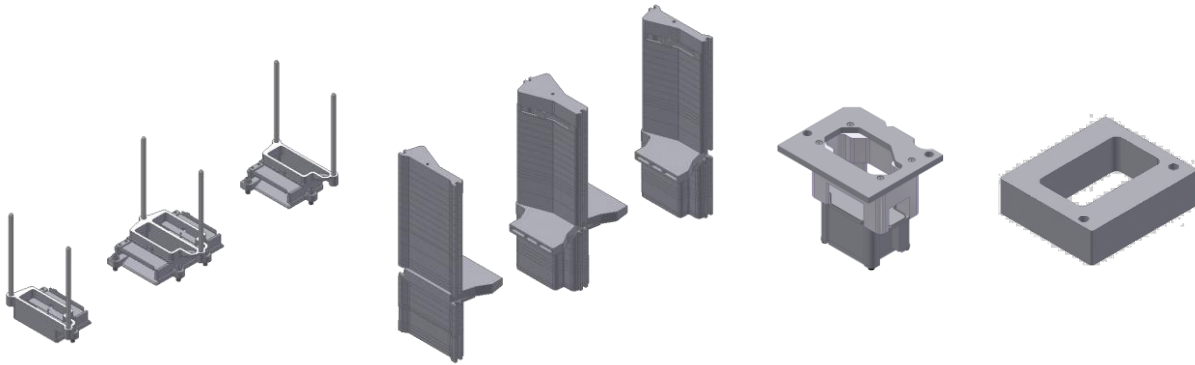


Intermit. Valve

CD	Description	Part No. w/o valve	Part No. with valve
4 ¼" DG & 5" DG & 85mm TG	Stack Cooling unit Middle *	2221092000	
	Stack Cooling unit RH *	2221092000	
	Stack Cooling unit LH *	2221092000	
All	Intermit. Valve RH *	2101216100	
	Intermit. Valve LH *	2101216000	

BLOW MOULD COOLING – 5 1/2” DG

BB – STACK COOLING RADIAL



Wind Nozzle base

cooling pieces and spacer

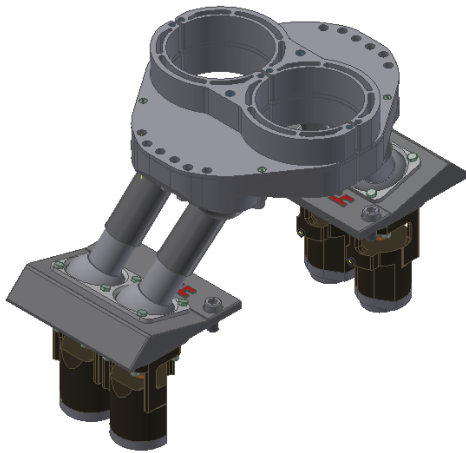
Intermit. Valve

Blow side spacer

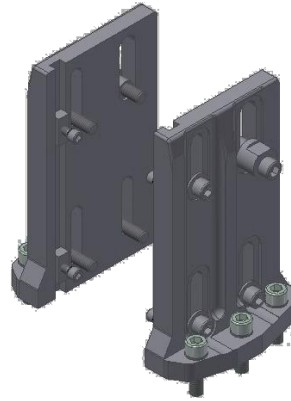
Description	Part No. w/o valve
Wind nozzle base LH, Middle, RH for 6 sections	2106217600
cooling pieces and spacer for 6 sections	2106217400
Wind nozzle base LH, Middle, RH for 8 sections	2108217600
cooling pieces and spacer for 8 sections	2108217400
Intermit. Valve RH	2101216600
Intermit. Valve LH	2101216500
Blow side spacer	2101216505

BLOW MOULD COOLING – 5 1/2" DG

360° AXIAL MOULD COOLING



RH & LH with 35mm 6" Mould Adapter



Mounting Kit RH / LH

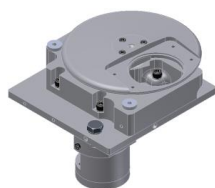


Adapter H=35mm

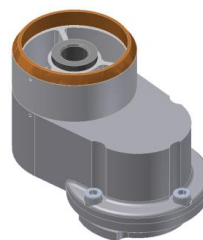
Description	Part No.
360° Axial Cooling RH / LH	2241402000
Mounting Kit RH / LH	2241402200
360° Axial Cooling Piece 5 1/2"	2241402100
Adapter H=35mm 6" Mould	2241402108
Adapter H=30mm 5 3/8" Mould	2241402109
Adapter H=15mm 5 3/8" Mould	2241402104
Adapter H=15mm 5" Mould	2241402106

BLOW MOULD COOLING – 6 ¼” CD DG

AXIAL MOULD COOLING (AC) EQUIPPED WITH BALL BEARINGS



Air supply

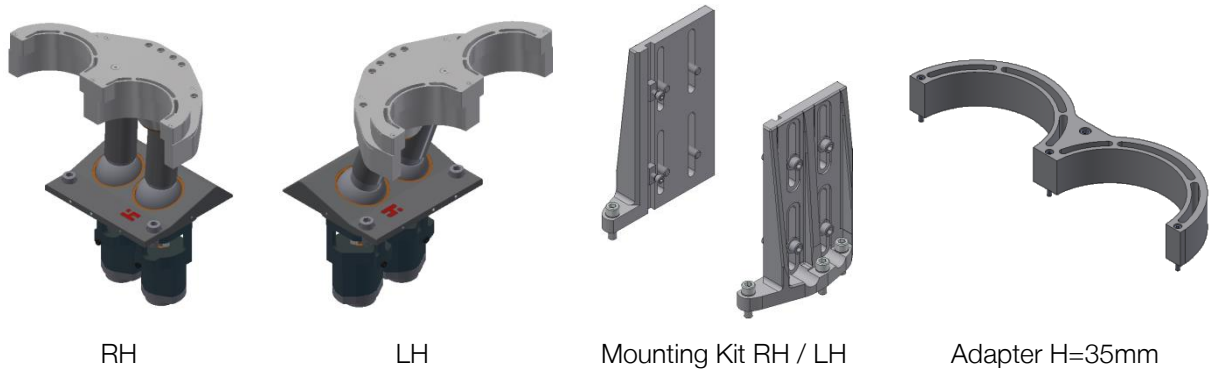


Air supply channel

Description	Part No.
Air supply RH (cpl. with intermitt. valve)	2102416400
Air supply LH (cpl. with intermitt. valve)	2102416500
Air supply RH (cpl. with intermitt. Valve, optimized mounting plate)	2102416800
Air supply LH (cpl. with intermitt. Valve, optimized mounting plate)	2102416900
Air supply channel	2101416600
Air supply channel 1”	2101416900
Air supply channel 1 ¼”	2101416700
Cooling Piece for 6 ¼” Moulds	2102412500
Adapter for 5” Moulds	2102414000
Mounting Parts	2102418200
Blow mould holder with cooling piece holder	2102412900

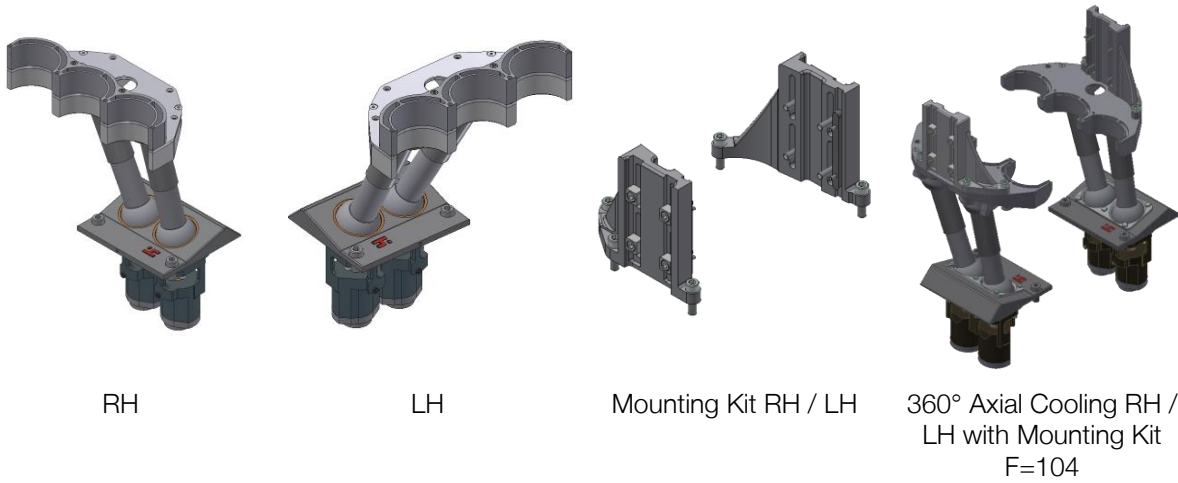
BLOW MOULD COOLING – 6 ¼” DG

360° AXIAL MOULD COOLING

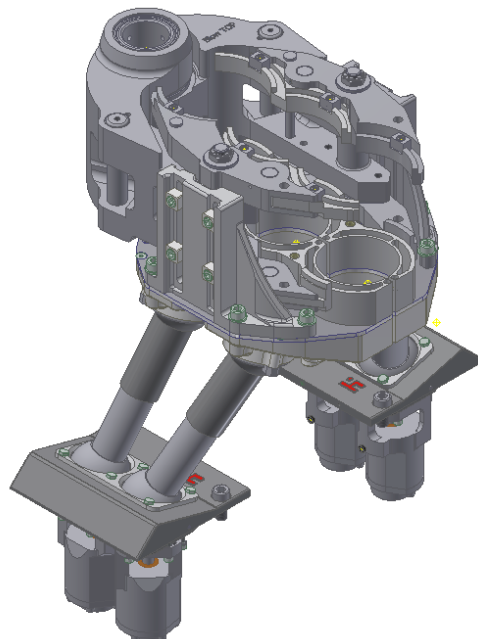


Description	Part No.
360° Axial Cooling RH with 5" Mould-adapter	2241401000
360° Axial Cooling LH with 5" Mould-adapter	2241401100
Mounting Kit RH / LH	2241400300
Adapter H=35mm	2241401300
360° Axial Cooling Piece 6 ¼"	2241400100

BLOW MOULD COOLING – 4 1/4” CD TG
360° AXIAL MOULD COOLING (AC)



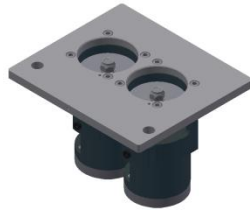
Description	Part No.
360° Axial Cooling RH F=90	2241300100
360° Axial Cooling LH F=90	2241310100
Mounting Kit RH / LH (155mm)	2241300240
360° Axial Cooling RH / LH with Mounting Kit F=104 Cooling Piece	2241300300
Cooling Piece F=90	2241300120
Cooling Piece F=104	2241300170
Mounting Kit for long Articles (273mm)	2241300190
Complete Cooling Assembly with F=90, Mounting Kit 155mm, Mould Holder 213F203700	2241301000



BLOW MOULD COOLING – 6 ¼” CD DG

STACK COOLING RADIAL

Can be used in connection with VAS



Intermittend Valve

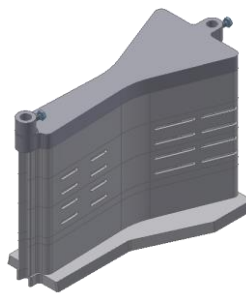


Stack Cooling incl. interm. valves

Description	Part No.
Blow Mould Cooling Intermittend Valve RH	213F212820
Blow Mould Cooling Intermittend Valve LH	213F212810
Blow Mould Cooling Center incl. interm. Valves **for 4 ¼” TG use aswell	213F212800
Blow Mould Cooling RH incl. interm. Valves **for 4 ¼” TG use aswell	213F212900
Blow Mould Cooling LH incl. interm. Valves **for 4 ¼” TG use aswell	213F213000

*Air supply can be used with stack cooling SG, DG & TG. Stack pieces can be used on blank mould side aswell.

Notice: Stack Cooling Pieces can be used on TG Machine (Other TG Pieces see below)



Description	Part No.
Stack Radial cooling conversion parts TG Middle	213F219600
Stack Radial cooling conversion parts TG RH	213F219800
Stack Radial cooling conversion parts TG LH	213F219700

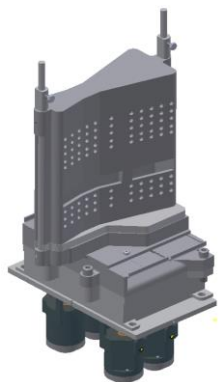
BLOW MOULD COOLING – 4 ¼” CD TG

STACK COOLING RADIAL

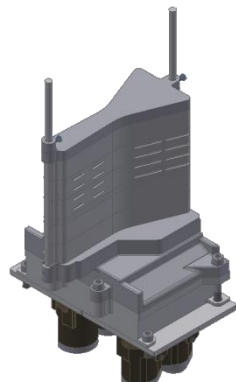
Can be used in connection with VAS



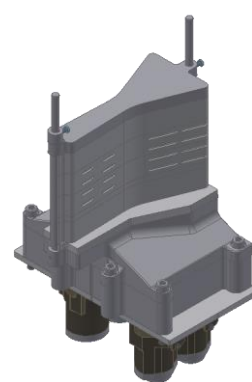
Intermittend Valve



Stack Cooling incl. interm. Valves**



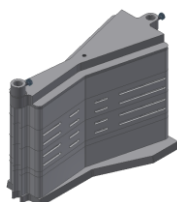
Stack Cooling incl. interm. Valves blank & blow-side stack pcs (Cast Plate)



Stack Cooling incl. interm. Valves blank & blow-side stack pcs

Description	Part No.
Blow Mould Cooling Intermittend Valve RH	213F212820
Blow Mould Cooling Intermittend Valve LH	213F212810
Blow Mould Stack Cooling Center incl. interm. Valves **for 6 ¼” DG use aswell	213F212800
Blow Mould Stack Cooling RH incl. interm. Valves **for 6 ¼” DG use aswell	213F212900
Blow Mould Stack Cooling LH incl. interm. Valves **for 6 ¼” DG use aswell	213F213000
Blow Mould Stack Cooling Center (Cast Plate) without air volume adjustment	2221081900
Blow Mould Stack Cooling RH (Cast Plate) without air volume adjustment	2221082000
Blow Mould Stack Cooling LH (Cast Plate) without air volume adjustment	2221082100
Blow Mould Stack Cooling Center (Cast Plate) without air volume adjustment	2221081600
Blow Mould Stack Cooling RH (Cast Plate) without air volume adjustment	2221081700
Blow Mould Stack Cooling LH (Cast Plate) without air volume adjustment	2221081800
Blow Mould Stack Cooling Center (Cast Plate) for small moulds (without Illustration)	2221081900
Blow Mould Stack Cooling RH (Cast Plate) for small moulds (without Illustration)	2221082000
Blow Mould Stack Cooling LH (Cast Plate) for small moulds (without Illustration)	2221082100

*Air supply can be used with stack cooling SG, DG & TG. Stack pieces can be used on blank mould side aswell.



Description	Part No.
Stack Radial cooling conversion parts DG Middle	213F218600
Stack Radial cooling conversion parts DG RH	213F218800
Stack Radial cooling conversion parts DG LH	213F218700