

SECTION 13.

PUSHER FINGER

PUSHER FINGER FOR TYPE 2158, 2157 & 2155



DuraTemp



CFC (Cerberite)

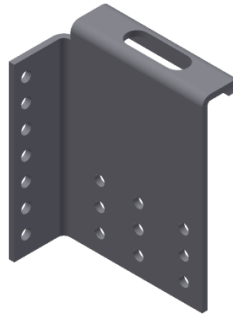


Stainless steel (1.4301)

Coat	Article diameter	Finger length	Finger height	Type 2157 & 2158	Type 2155	Part No.
DuraTemp	45 - 55 mm	58.5 mm	127mm	x	x	2157031000
		58.5 mm – short	56mm	x	-	2157031300
	55 - 65 mm	66 mm	127mm	x	x	2157031100
		66 mm – short	56mm	x	-	2157031400
	65 - 80 mm	78.2 mm	127mm	x	x	2157031200
		78.2 mm – short	56mm	x	-	2157031500
	80 – 95 mm	78.2 mm	127mm	x	x	2157031800
		78.2 mm – short	56mm	x	-	2157031900
90 – 100 mm	78.2 mm	127mm	x	-	2157031600	
	78.2 mm – short	56mm	x	-	2157031700	
Over 100 mm	60.5 mm		x	x	2157032000	
115 – 145 mm	87 mm		x	x	2157032300	
CF260Q (Cerberite)	50 – 65 mm	70 mm		x	x	2155081100
	60 – 70 mm	75 mm		x	x	2155081200
	65 – 80 mm	80 mm		x	x	2155081300
	70 – 90 mm	85 mm		x	x	2155081400
Stainless steel (1.4301)	50 – 65mm	70 mm	127mm	x	x	2155080111
		70 mm – short	56mm	x	-	2155080131
	60 – 70 mm	75 mm	127mm	x	x	2155080112
		75mm – short	56mm	x	-	2155080132
	65 – 80 mm	80 mm	127mm	x	x	2155080113
		80 mm – short	56mm	x	-	2155080133
	70 – 90 mm	85 mm		x	x	2155080114
		85 mm – short		x	-	2155080134

PUSHER FINGER FOR TYPE 2154

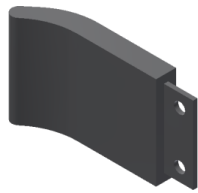
SHEET FINGER – STAINLESS STEEL



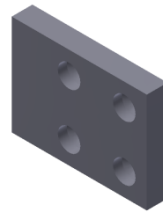
Sheet finger – stainless steel

Characteristic	Finger length	Part No.
13.5 mm RH	75 mm	2150C80521
13.5 mm LH		2150C80522
18.5 mm RH	75 mm	2150C80523
18.5 mm LH		2150C80524
23.5 mm RH	75 mm	2150C80525
23.5 mm LH		2150C80526
28.5 mm RH	75 mm	2150C80527
28.5 mm LH		2150C80528

PUSHER FINGER FOR TYPE 2154
DURA TEMP FINGER



Push finger curved



Pusher finger straight

Characteristic	Finger length	Part No.
Push finger curved	78.2 mm	9150130013
	58.5 mm	9150130014
	66 mm	9150130015
Push finger straight	60 mm	2150080583
	77 mm	2150080584
	65 mm	2150080586
	87 mm - MM375	9150130011
	60.5 mm - MM275	9150130012
	46.5 mm - MM218	9150130016
Sheet for Push finger	-	2150080502
Pusher finger straight (attached finger)	78 mm	2150080565
	60mm	2150080583
Distance plate attached finger	5 mm (40 x 40)	2150A80578
	10mm (40 x 40)	2150A80577
Mounting parts double-occupied	14.2 mm (1 distance plate)	2150A80700
	9.2 mm (no distance plate)	2150A80800
	19.2 mm (2 distance plates)	2150A80900
	24.2 mm (2 distance plates)	2150A80200
	29.2 mm (2 distance plates)	2150B80400
Mounting parts single-occupied	14.2 mm (1 distance plate)	2150B80700
	9.2 mm (no distance plate)	2150B80800
	19.2 mm (2 distance plates)	2150B80900
	24.2 mm (2 distance plates)	2150B80500
	29.2 mm (2 distance plates)	2150B80600